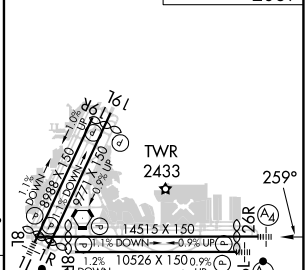


ILS Y or LOC Y RWY 26R
HARRY REID INTL (LAS)

MISSED APPROACH: Climb to 3200 then climbing right turn to 6000 heading 080° and on BLD R-286 to BLD VORTAC and hold, continue climb-in-hold to 6000.

ELEV 2181	D	TDZE 26R 2067
		TDZE 26L 2069



MIRL Rwy 1R-19L
REIL Rwys 1R, 8R, 19L and 19R
HIRL Rwys 1L-19B, 8L-26B and 8R-26L

FAF to MAP 5.3 NM					
Knots	60	90	120	150	180
Min:Sec	5:18	3:32	2:39	2:07	1:46

SW-4, 10 JUL 2025 to 07 AUG 2025