



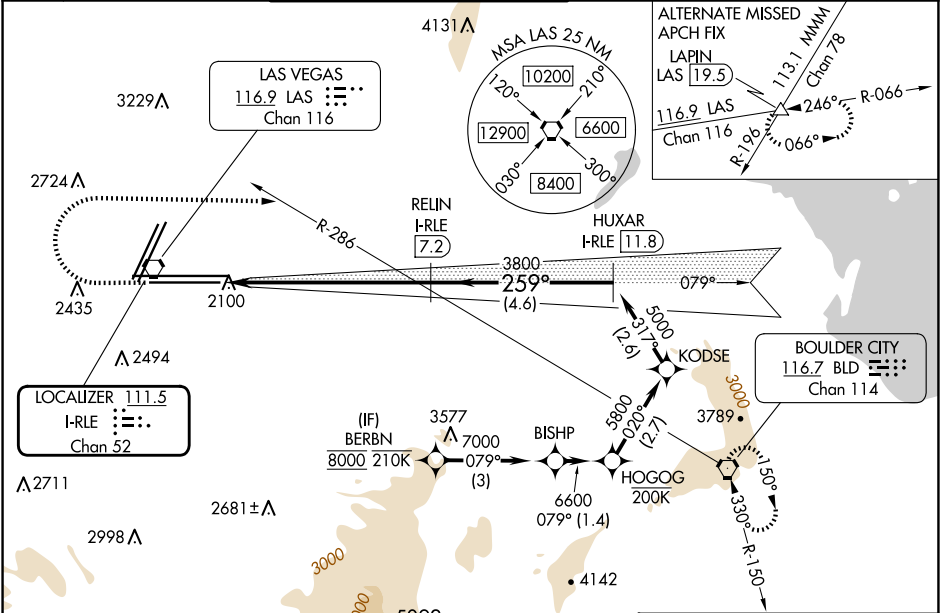


LOC/DME I-RLE 111.5 Chan 52	APP CRS 259°		26L	26R
		Rwy Idg	10526	12638
		TDZE	2069	2067
		Apt Elev	2181	2181

ILS Y or LOC Y RWY 26L
HARRY REID INTL (LAS)

RNP APCH - GPS.			MALSF Rwy 26L 	MALS Rwy 26R 	MISSED APPROACH: Climb to 3200 then climbing right turn to 6000 heading 080° and on BLD R-286 to BLD VORTAC and hold, continue climb-in-hold to 6000.			
DME required.								
Inop table does not apply to S-ILS 26L or Sidestep 26R. For inop ALS increase S-LOC 26L Cats C and D visibility to 1½ SM.								
								
D-ATIS	LAS VEGAS APP CON		LAS VEGAS TOWER		GND CON		CLNC DEL	CPDLC
132.4	125.025	379.15 (West)	118.75	257.8 (Rwy 1L/19R, 1R/19L)	121.1	270.8 E of 1R/19L		
	119.775	282.2 (East)	119.9	257.8 (Rwy 8L/26R, 8R/26L)	121.9	254.3 W of 1L/19R	118.0	



3200	6000	BLD	VGSI and ILS glidepath not coincident (VGSI Angle 3.00/TCH 84).	BERBN
hdg 080°	R-286			
I-RLE 1.9	I-RLE 3.1	RELIN	HUXAR	KODSE
I-RLE 7.2	I-RLE 11.8			
3800	3800	3800	5000	5800
259°	317°	020°	079°	079°
1.2 NM	4.1 NM	4.6 NM	2.6	2.7
1.4	3 NM			
CATEGORY	A	B	C	D
S-ILS 26L	2269-¾ 200 (100-¾)			
S-LOC 26L	2520-¾ 451 (400-¾)	2520-1 451 (400-1)		
SIDESTEP 26R	2560-1 493 (400-1)	2560-1½ 493 (400-1½)	2560-2 493 (400-2)	
CIRCLING	3020-1¼ 839 (900-1¼)	3060-1¼ 879 (900-1¼)	3100-2¾ 919 (1000-2¾)	3540-3 1359 (1400-3)

