

ISHEE TWO ARRIVAL

AL-662 (FAA)

HARRY REID INTL (LAS)
LAS VEGAS, NEVADA

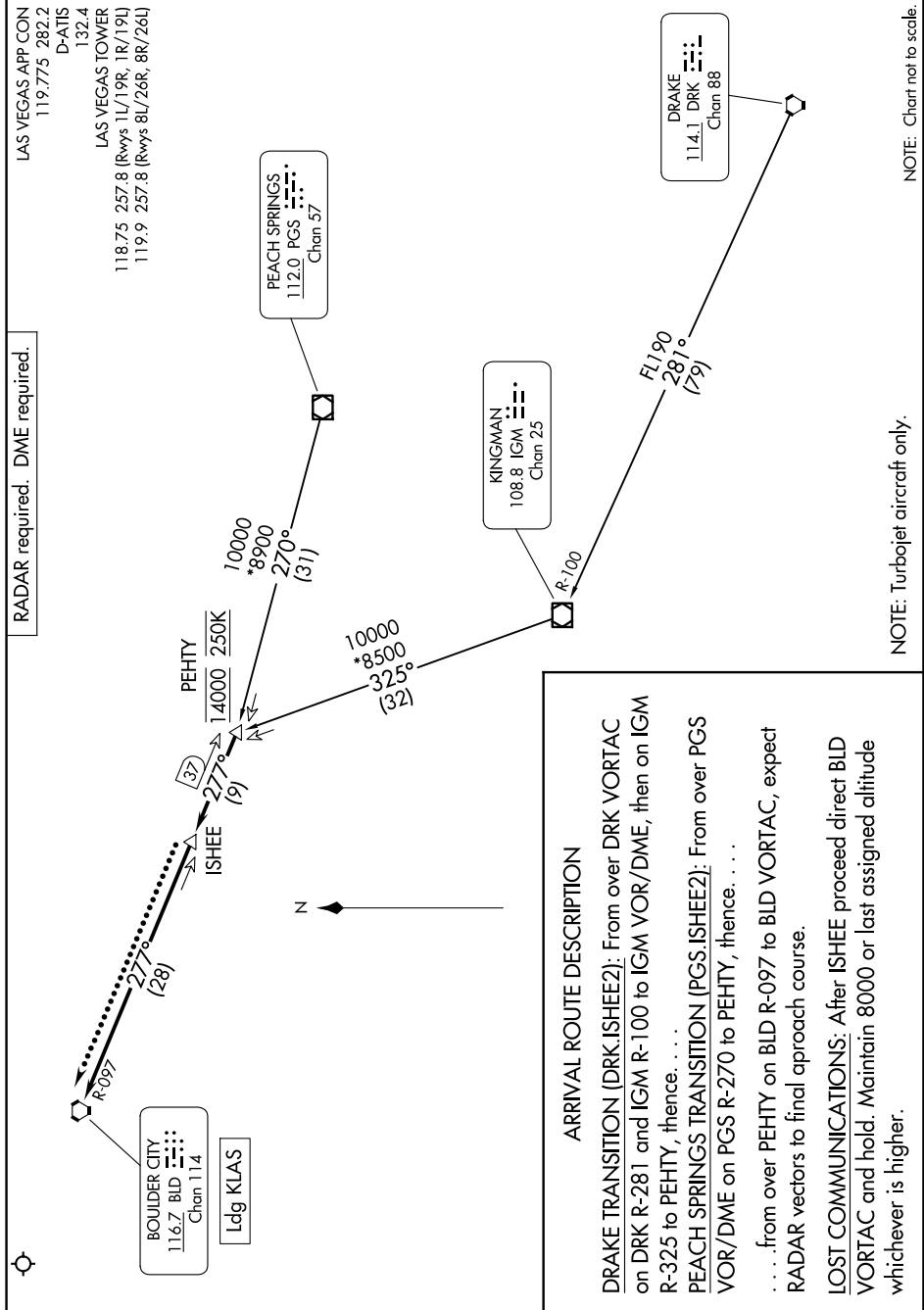
LAS VEGAS APP CON	119.775	282.2
D-ATIS		
		132.4
LAS VEGAS TOWER		
	118.75	257.8 (Rwys 1L/19R, 1R/19L)
	119.9	257.8 (Rwys 8L/26R, 8R/26L)

RADAR required. DME required.

NOTE: Chart not to scale.

NOTE: Turbojet aircraft only.

SW-4, 10 JUL 2025 to 07 AUG 2025



ISHEE TWO ARRIVAL
(PEHTY.ISHEE2) 27JAN22

LAS VEGAS, NEVADA
HARRY REID INTL (LAS)