

WAAS CH 62813 W04A	APP CRS 044°	Rwy Idg 7502 TDZE 962 Apt Elev 962
--	------------------------	---

RNAV (GPS) RWY 4

WILKES-BARRE/SCRANTON INTL (A VP)

⚠

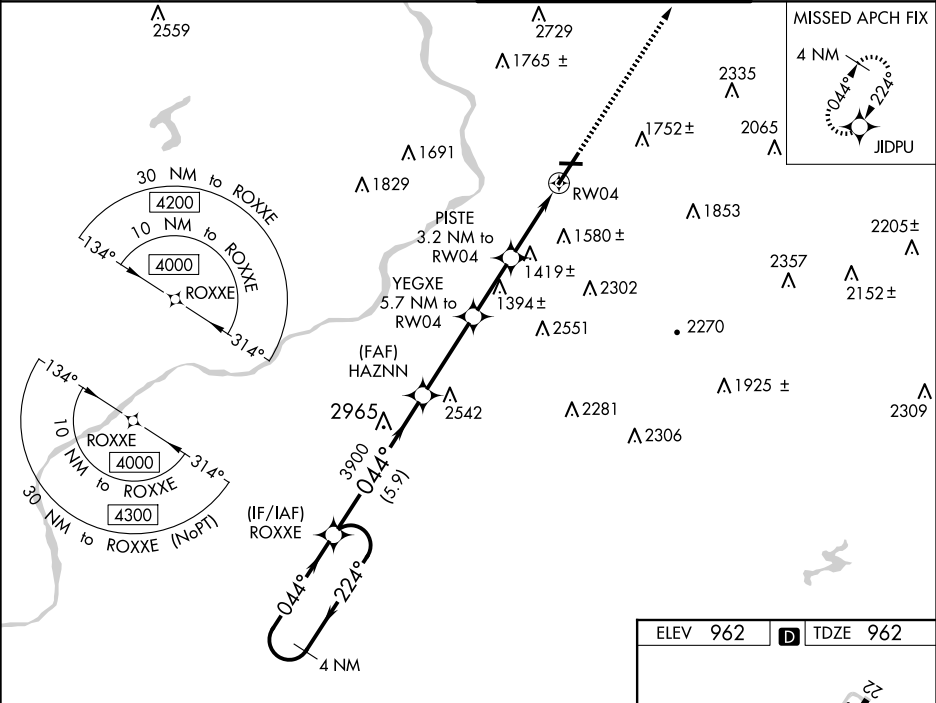
⚠

Circling to Rwy 10 and 28 NA at night. For uncompensated Baro-VNAV systems, LNAV/VNAV NA below -17°C (2°F) or above 54°C (130°F). When local altimeter setting not received, procedure NA. For inop MALS/R, increase LNAV Cats C/D visibility to 2 miles. Circling NA for Cats C and D southeast of Rwy 4-22. DME/DME RNP-0.3 NA. **RVR 1800 authorized with use of FD or AP or HUD to DA.

MALS/R

MISSED APPROACH: Climb to 4000 direct JIDPU and hold.

ATIS 135.75	WILKES-BARRE APP CON 120.95 256.7 (280°-100°) 126.3 256.7 (101°-279°)	WILKES-BARRE TOWER 120.1 257.8	GND CON 121.9
-----------------------	---	--	-------------------------



				4000		JIDPU			
CATEGORY		A		B		C		D	
LPV DA **		1162/24		200 (200-½)					
LNAV/VNAV DA		1618-1¼		656 (700-1¼)					
LNAV MDA		1680/24 718 (800-½)		1680-1½ 718 (800-1½)					
CIRCLING		1840-1¼ 878 (900-1¼)		1980-1½ 1018 (1100-½)		1980-3 1018 (1100-3)		2280-3 1318 (1400-3)	

