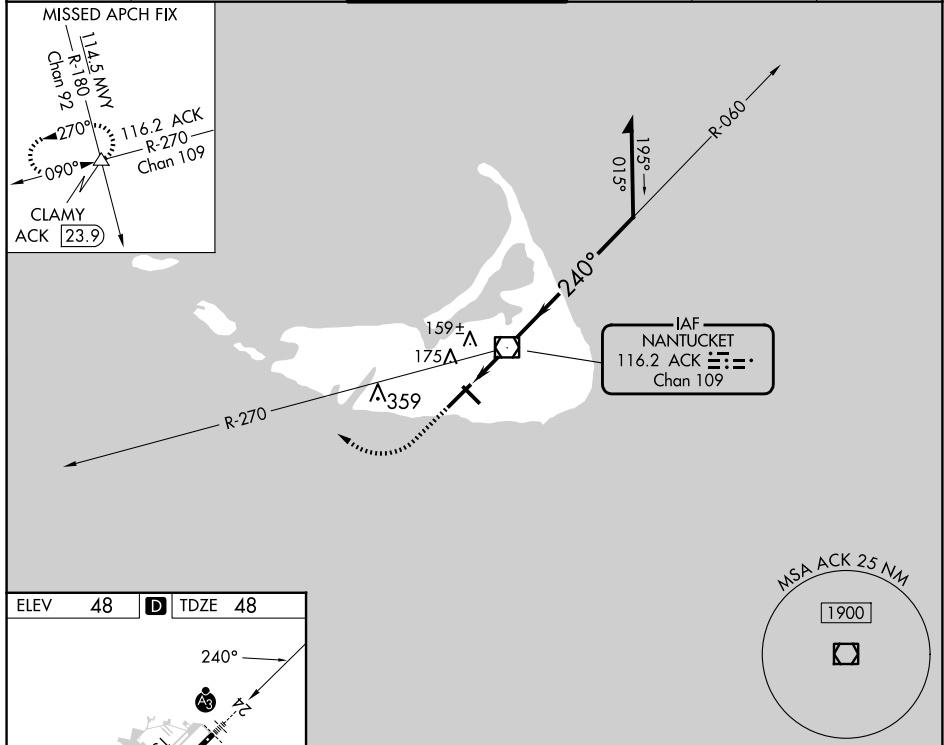


VOR RWY 24  
NANTUCKET MEML (ACK)

**MISSED APPROACH:** Climb to 700 then climbing right turn to 2500 via heading 310° and ACK VOR/DME R-270 to CLAMY INT/ACK 23.9 DME and hold.

MISSED APCH FIX

700 ↑	2500 hdg 310°	ACK R-270	CLAMY △	ACK VOR/DME 6000	Remain within 10 NM			
				060° 1800				
				240° 800				
				VGSI and descent angles not coincident (VGSI Angle 3.00/TCH 48).				
				ACK 0.9 ACK 1.9 3.47° TCH 48 1 NM 0.9 NM				
CATEGORY	A		B		C		D	
S-24	440/24		393 (400-½)		440/40		393 (400-¾)	
CIRCLING	480-1 433 (500-1)		500-1 453 (500-1)		720-2 673 (700-2)		720-2¼ 673 (700-2¼)	