

WAAS CH 93612 W24A	APP CRS 241°	Rwy Ldg TDZE Apt Elev 47
--	------------------------	---------------------------------------

RNAV (GPS) RWY 24

NANTUCKET MEML (ACK)


RNP APCH - GPS.

▼

⚠

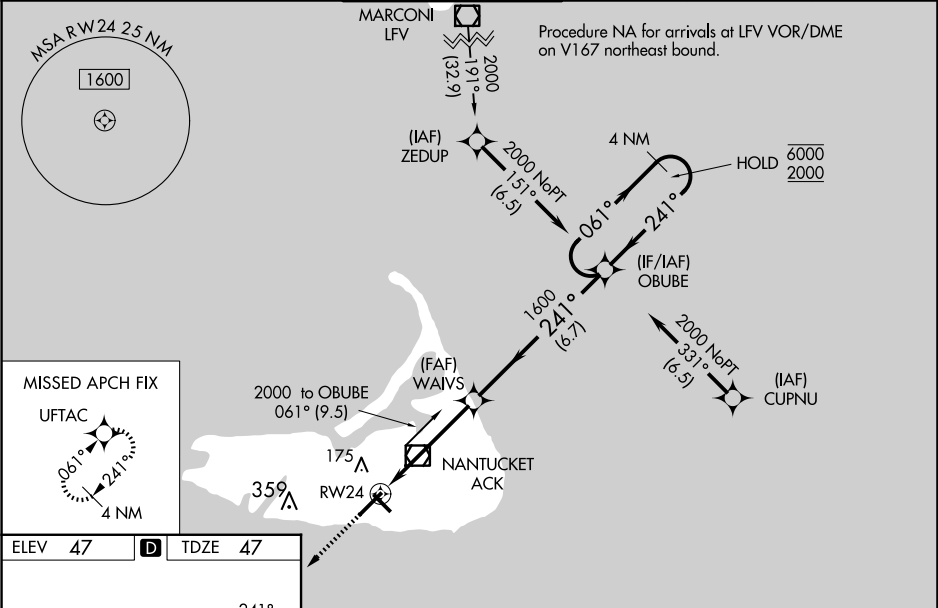
For uncompensated Baro-VNAV systems, LNAV/VNAV NA below -12°C or above 54°C.
For inop ALS increase LNAV/VNAV all Cats visibility to RVR 4000 and LNAV Cats C/D visibility to 1½ SM. When local altimeter setting not received, use HYA altimeter setting and increase LPV DA to 310 feet and all visibilities to RVR 2000; increase LNAV/VNAV DA to 363 feet; increase all MDAs 80 feet and LNAV visibility Cat C/D to RVR 6000 and Circling visibility Cat C/D ¼ SM. Baro-VNAV and VDP NA when using HYA altimeter setting.
For inop ALS when using HYA altimeter setting, increase LPV and LNAV/VNAV visibility all Cats to RVR 4500 and LNAV Cat C/D to 1½ SM.

SSALR



MISSED APPROACH:
Climb to 2300 direct
UFTAC and hold.

ATIS 127.5	BOSTON APP CON 126.1 318.1	NANTUCKET TOWER ★ 118.3 (CTAF) 0	GND CON 132.5	CLNC DEL 119.375	UNICOM 122.95
----------------------	--------------------------------------	--	-------------------------	----------------------------	-------------------------



ELEV 47

D

TDZE 47

241°

2300

UFTAC

TWR 107

0.23° UP

6303 x 150

4500 x 100

4 NM

Holding Pattern

OBUBE

061° → 6000

← 241° 2000

GP 3.00°

TCH 47

1.3 NM to RW24

1600

WAIVS

1600

1.3 NM

3.4 NM

6.7 NM

CATEGORY	A	B	C	D
LPV DA	247/18 200 (200-½)			
LNAV/VNAV DA	300/24 253 (300-½)			
LNAV MDA	520/24 473 (500-½)		520/50 473 (500-1)	
C CIRCLING	520-1 473 (500-1)		720-2 673 (700-2) 720-2¼ 673 (700-2¼)	

TDZ/CL Rwy 24

REIL Rwys 15 and 33

MIRL Rwy 15-33

HIRL Rwy 6-24