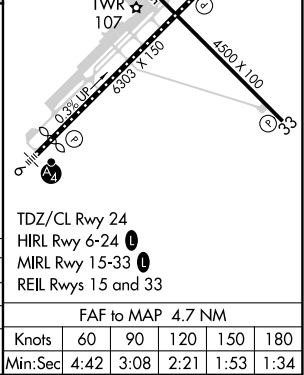
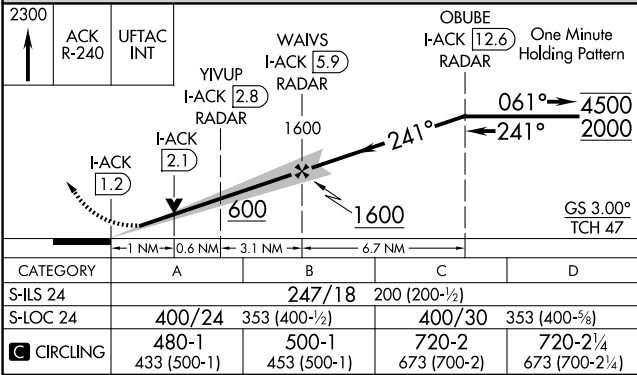
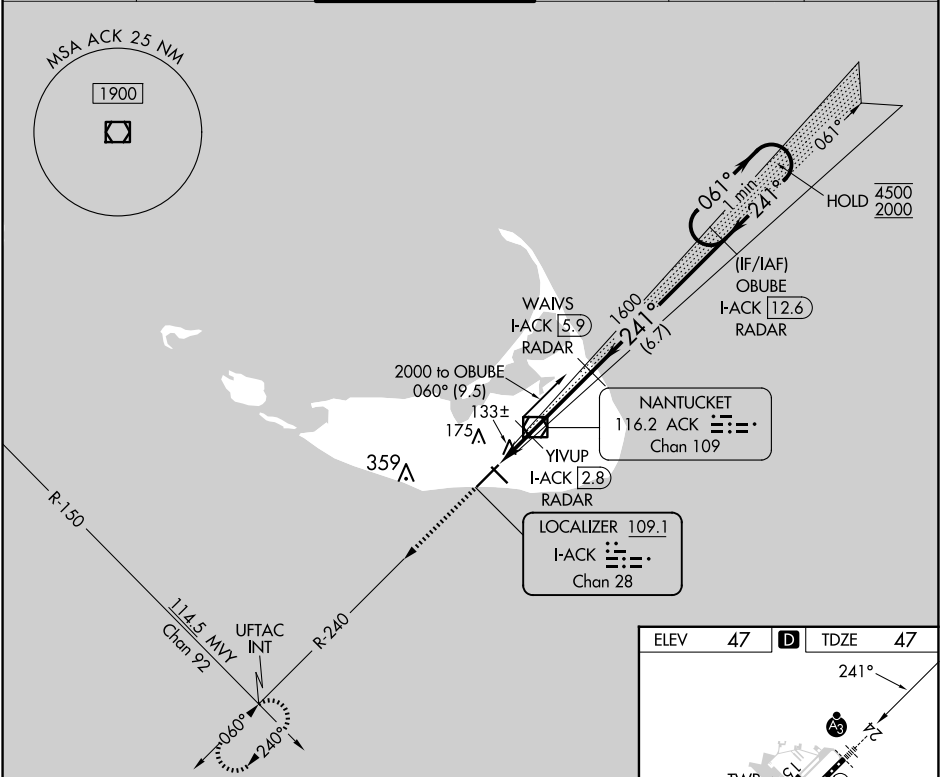


LOC/DME I-ACK 109.1 Chan 28	APP CRS 241°	Rwy Idg TDZE Apt Elev 6303 47 47
---	------------------------	--

ILS or LOC RWY 24
NANTUCKET MEML (ACK)

DME or RADAR required.			SSALR	MISSED APPROACH: Climb to 2300 on ACK VOR/DME R-240 direct UFTAC INT and hold.	
For inop ALS, increase S-LOC 24 Cat C and D visibilities to RVR 5500.					

ATIS 127.5	BOSTON APP CON 126.1 318.1	NANTUCKET TOWER ★ 118.3 (CTAF) 0	GND CON 132.5	CLNC DEL 119.375	UNICOM 122.95
----------------------	--------------------------------------	--	-------------------------	----------------------------	-------------------------



NE-1, 10 JUL 2025 to 07 AUG 2025

NE-1, 10 JUL 2025 to 07 AUG 2025