

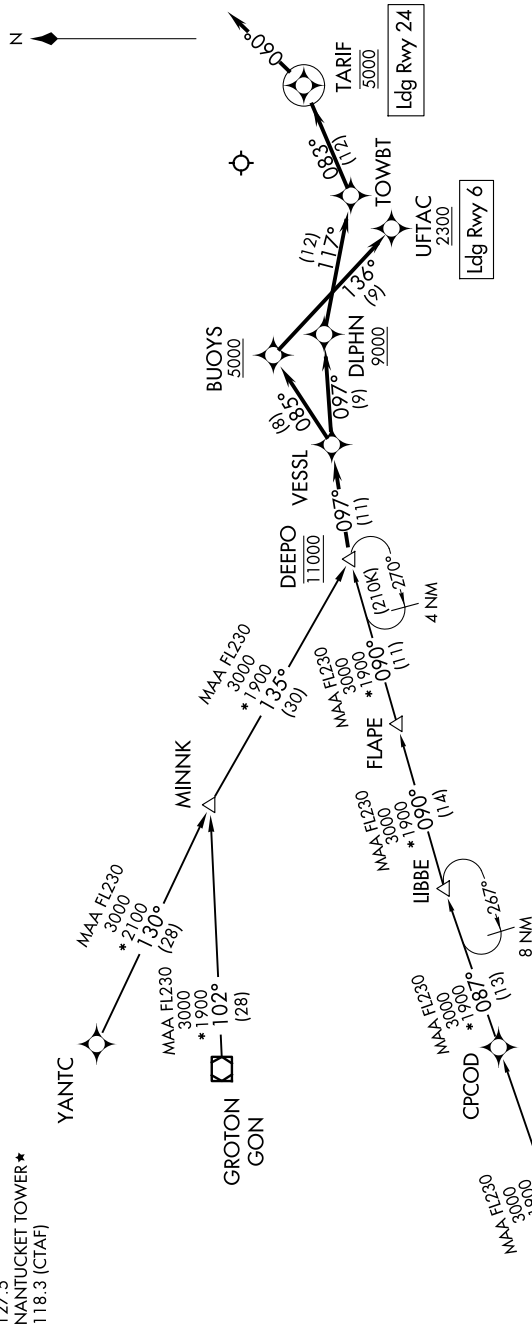
NANTUCKET MEML (ACK)  
NANTUCKET, MASSACHUSETTS

## DEEPO TWO ARRIVAL (RNAV)

NANTUCKET, MASSACHUSETTS  
NANTUCKET MEML (ACK)

BOSTON APP CON  
133.75 318.1  
ATIS  
127.5  
NANTUCKET TOWER  
118.3 (CTAF)

RNAV 1 - DME/DME/IRU or GPS	RADAR required
-----------------------------	----------------



NOTE: Chart not to scale.

GROTON TRANSITION (GON.DEEPO2)  
KYSKY TRANSITION (KYSKY.DEEPO2)  
YANTC TRANSITION (YANTC.DEEPO2)

From DEEPO on track 097° to VESSL.

LANDING RUNWAY 6: From VESSL on track 085° to cross BUOYS at or above 5000, then on track 136° to cross UFTAC at or above 2300. Expect ILS or LOC RWY 6 approach.

NE-1, 10 JUL 2025 to 07 AUG 2025