

WAAS CH <b>70346</b> <b>W33A</b>	APP CRS <b>330°</b>	Rwy Idg TDZE Apt Elev	<b>4007</b> <b>265</b> <b>265</b>
--	------------------------	-----------------------------	---

RNAV (GPS) RWY 33  
PRINCETON MUNI (PNN)

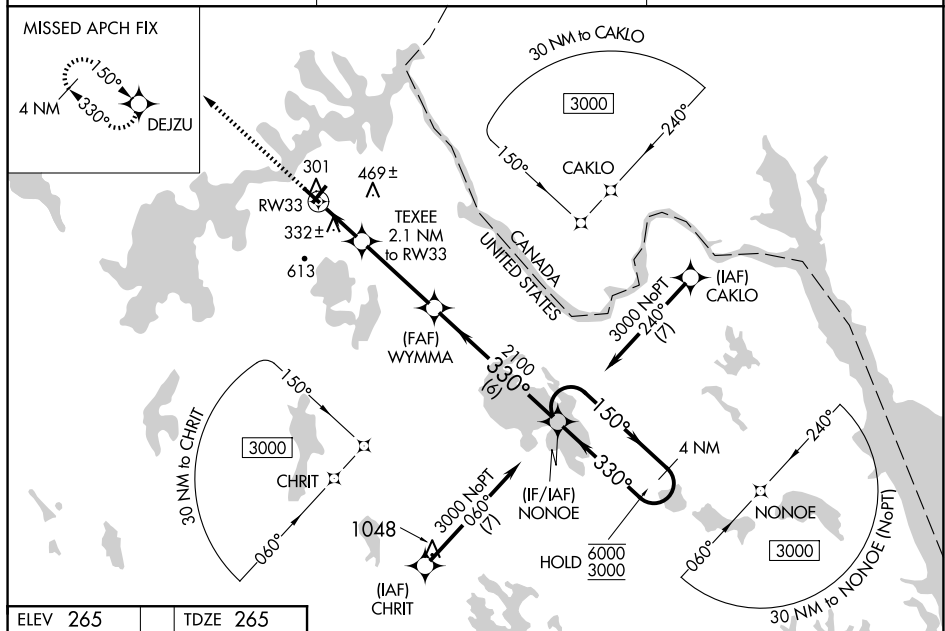
RNP APCH - GPS.

**V** Baro-VNAV and VDP NA when using Bangor altimeter setting. For uncompensated Baro-VNAV  
**A** **NA** systems, LNAV/VNAV NA below -15°C or above 54°C. When local altimeter setting not received, use Bangor altimeter setting: increase LPV DA to 661 feet and all visibilities 1/2 SM; increase LNAV/VNAV DA to 683 feet and all visibilities 1/2 SM; increase all MDAs 160 feet and visibility LNAV Cat C/D 3/4 SM and Circling Cat C/D 1/2 SM.

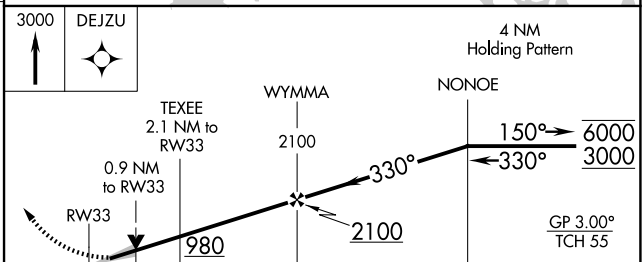
**MISSED APPROACH:**  
Climb to 3000 direct  
DEJZU and hold, continue  
climb-in-hold to 3000.

AWOS-AV <b>122.7</b>	BOSTON CENTER <b>124.25 290.5</b>	UNICOM <b>122.7 (CTAF) 0</b>
-------------------------	--------------------------------------	---------------------------------

MISSED APCH FIX



ELEV 265		TDZE 265
----------	--	----------



	0.9	1.2	3.5 NM	6 NM	
CATEGORY	A		B	C	D
LPV DA			515-1	250 (300-1)	
LNAV/ VNAV DA			537-1	272 (300-1)	
LNAV MDA			600-1	335 (400-1)	
CIRCLING	720-1 455 (500-1)	820-1 555 (600-1)	980-2 715 (800-2)	980-2 $\frac{1}{4}$ 715 (800-2 $\frac{1}{4}$ )	

MIRL Rwy 15-33 **L**