

WAAS CH 65709 W09A	APP CRS 096°	Rwy Ldg 11640 TDZE 883 Apt Elev 896
--	------------------------	--

RNAV (GPS) Y RWY 9
CINCINNATI/NORTHERN KENTUCKY INTL (C'VG)

RNP APCH - GPS.

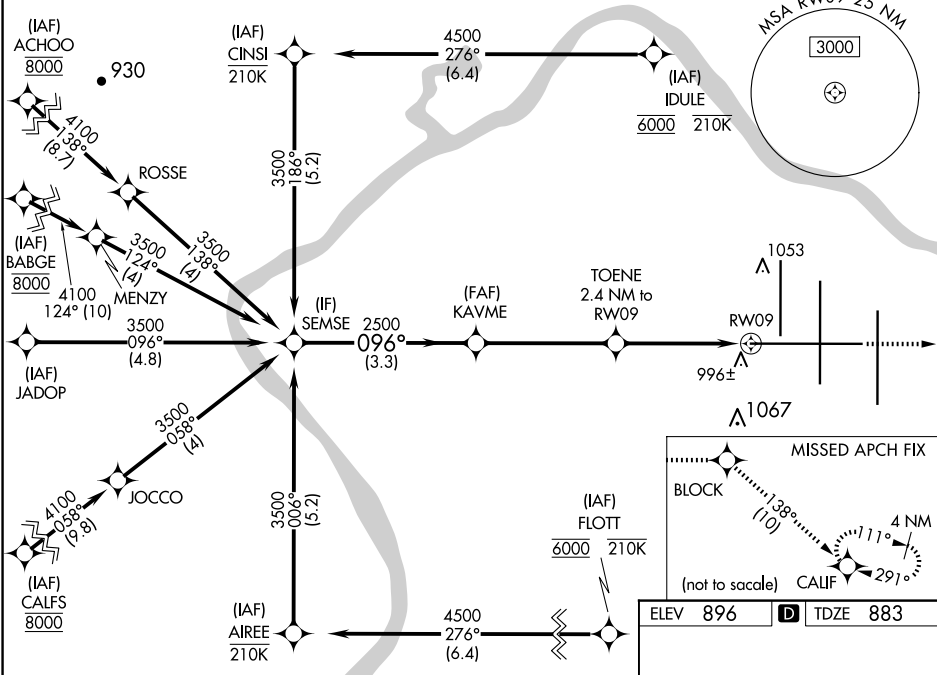
For uncompensated Baro-VNAV systems, LNAV/VNAV NA below -14°C or above 54°C. For inop ALS, increase LNAV/VNAV all Cats visibility to RVR 5500 and LNAV Cat C and D visibility to RVR 5500.

MALSR



MISSED APPROACH: Climb to 3000 direct BLOCK and on track 138° to CALIF and hold.

D-ATIS		CINCINNATI APP CON	CINCINNATI TOWER	GND CON	CLNC DEL	CPDLC
ARR	DEP	119.7 363.15 (090°-269°) 123.875 363.15 (270°-089°)	118.975 360.85 (RWY 18L/36R) 118.3 (RWYS 18C/36C, 09/27) 133.325 (RWY 18R/36L)	121.7	127.175	
134.375	135.3					



VGSI and RNAV glidepath not coincident (VGSI Angle 3.00/TCH 70).				
CATEGORY	A	B	C	D
LPV DA	1083/18		200 (200-½)	
LNAV/VNAV DA	1260/35		377 (400-⅝)	
LNAV MDA	1260/24	377 (400-½)	1260/35	377 (400-⅝)
CIRCLING	1460-1	564 (600-1)	1560-1¾ 664 (700-¾)	1560-2 664 (700-2)

ELEV 896 **D** TDZE 883

