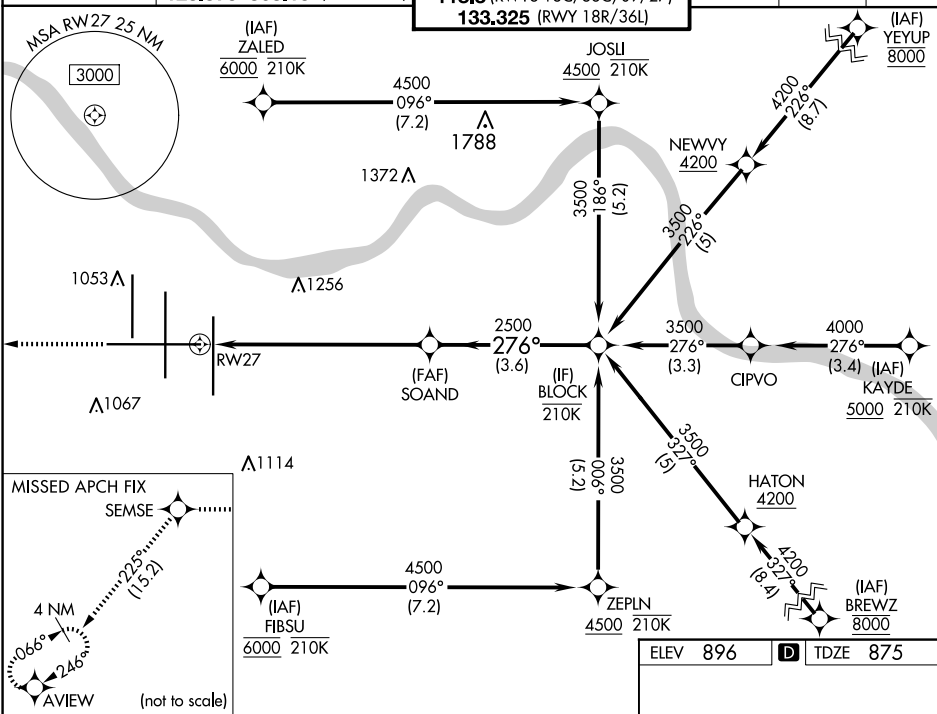


WAAS CH <b>86809</b> <b>W27A</b>	APP CRS <b>276°</b>	Rwy Ldg <b>12000</b> TDZE <b>875</b> Apt Elev <b>896</b>
--	------------------------	--

RNAV (GPS) Y RWY 27  
CINCINNATI/NORTHERN KENTUCKY INTL (CVG)

RNP APCH - GPS. For uncompensated Baro-VNAV systems, LNAV/VNAV NA below -14°C or above 54°C. * RVR 1800 authorized with use of FD or AP or HUD to DA.	MALSR	MISSED APPROACH: Climb to 3000 direct SEMSE then on track 225° to AVIEW and hold.
--	-------	---

D-ATIS ARR <b>134.375</b> DEP <b>135.3</b>	CINCINNATI APP CON <b>119.7 363.15</b> (090°-269°) <b>123.875 363.15</b> (270°-089°)	CINCINNATI TOWER <b>118.975 360.85</b> (RWY 18L/36R) <b>118.3</b> (RWYS 18C/36C, 09/27) <b>133.325</b> (RWY 18R/36L)	GND CON <b>121.7</b>	CLNC DEL <b>127.175</b>	CPDLC
---	--	---	-------------------------	----------------------------	-------



3000	SEMSE	tr 225°	AVIEW	VGSI and RNAV glidepath not coincident (VGSI Angle 3.00/TCH 67°).			
↑	✧		✧	SOAND	BLOCK		
				2500	3500		
				2500			
					GP 3.00°		
					TCH 55		
				1.5 NM	3.4 NM	3.6 NM	
CATEGORY	A	B	C	D			
LPV DA*	1075/24		200 (200-½)				
LNAV/VNAV DA	1320/45		445 (500-¾)				
LNAV MDA	1420/24	545 (600-½)	1420/60	545 (600-1¼)			
CIRCLING	1460-1	564 (600-1)	1560-1¾ 664 (700-1¾)	1560-2 664 (700-2)			

