

WAAS CH 86803 W18B	APP CRS 186°	Rwy Ldg 11000 TDZE 875 Apt Elev 896
--	------------------------	--

RNAV (GPS) Y RWY 18C
CINCINNATI/NORTHERN KENTUCKY INTL (CVG)

RNP APCH - GPS.

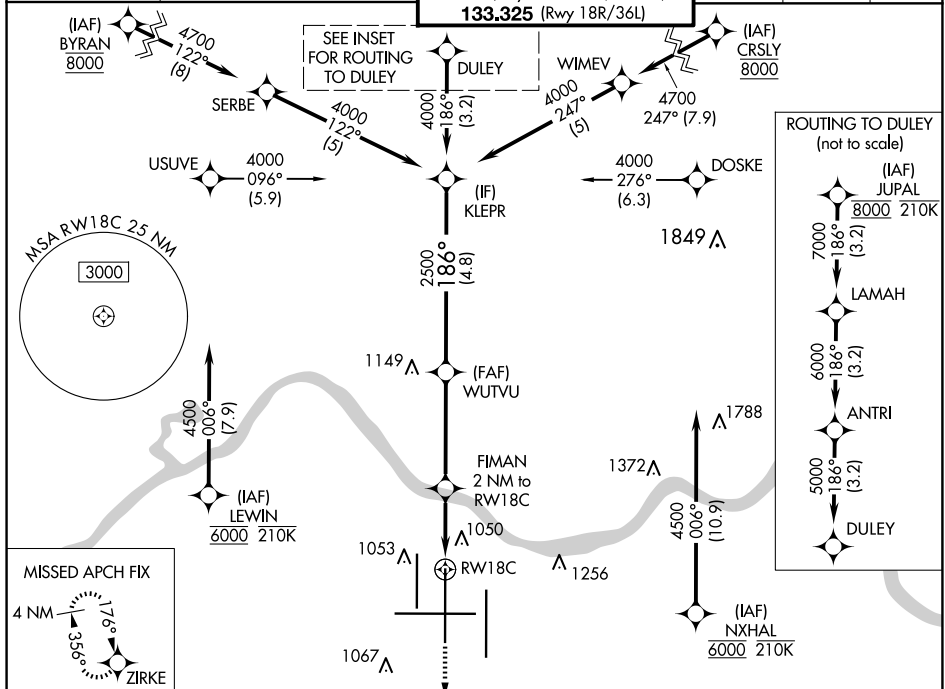
T For uncompensated Baro-VNAV systems, LNAV/VNAV NA below -14°C or above 54°C. Simultaneous approach authorized with Rwy 18L/R. LNAV procedure NA during simultaneous operations. Use of FD or AP required during simultaneous operations. For Inop ALS, increase LNAV Cat C/D visibility to 1% SM.

MALSR



MISSED APPROACH: Climb to 1300, then climb to 3000 direct ZIRKE and hold.

D-ATIS		CINNINNATI APP CON		CINNINNATI TOWER		GND CON	CLNC DEL	CPDLC
ARR	DEP	119.7	363.15 (090°-269°)	118.975	360.85 (Rwy 18L/36R)			
134.375	135.3	123.875	363.15 (270°-089°)	118.3	(Rwys 18C/36C, 09/27)	121.7	127.175	



ELEV 896 **D** **TDZE 875**

186°

1300 3000 ZIRKE

VGSI and RNAV glidepath not coincident (VGSI Angle 3.00/TCH 71).

RW18C

1.3 NM to RW18C

FIMAN 2 NM to RW18C

WUTVU 2500

KLEPR

186° 4000

GP 3.00° TCH 55

1.3 NM 0.7 NM 2.9 NM 4.8 NM

CATEGORY	A	B	C	D
LPV DA	1075/18	200 (200-1/2)		
LNNAV/VNAV DA	1398/55	523 (600-1)		
LNNAV MDA	1360/24	485 (500-1/2)	1360/50	485 (500-1)
C CIRCLING	1460-1	564 (600-1)	1560-13/4 664 (700-13/4)	1560-2 664 (700-2)

HIRL all Rwy's
TDZ/CL all Rwy's except 27

RNAV (GPS) Y RWY 18C