

APP CRS
096°

Rwy Ldg
11640

TDZE
883

Apt Elev
896

RNAV (RNP) Z RWY 9

CINCINNATI/NORTHERN KENTUCKY INTL (CVG)

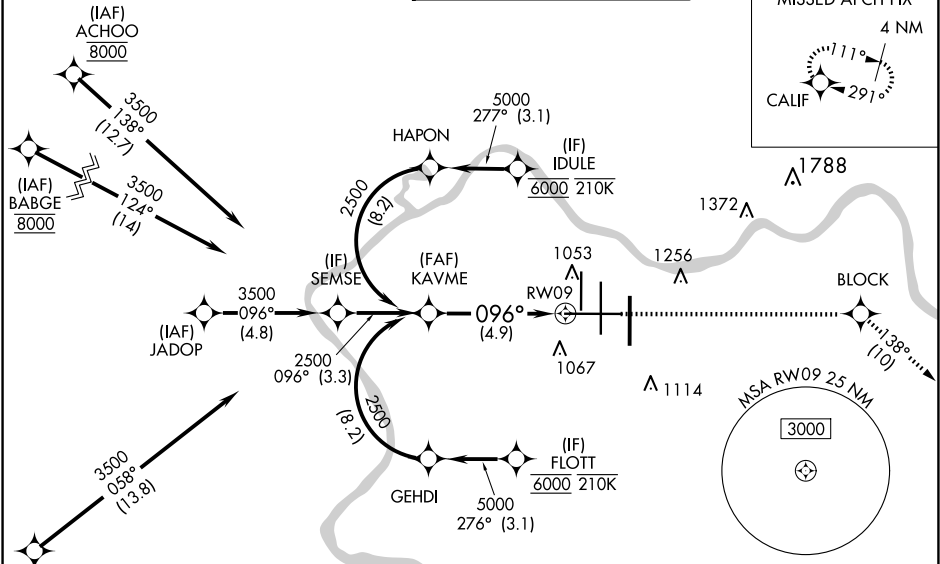
RNP AR APCH - GPS.

▼ For uncompensated Baro-VNAV systems, procedure NA below -14°C or above 54°C.

MALSR

MISSED APPROACH: Climb to 3000 direct BLOCK and on track 138° to CALIF and hold.

D-ATIS		CINCINNATI APP CON		CINCINNATI TOWER		GND CON	CLNC DEL	CPDLC
ARR	DEP	119.7	363.15 (090°-269°)	118.975	360.85 (RWY 18L/36R)			
134.375	135.3	123.875	363.15 (270°-089°)	118.3	(RWYS 18C/36C, 09/27)	121.7	127.175	
				133.325	(RWY 18R/36L)			



ELEV 896

D

TDZE 883

VGSI and RNAV glidepath not coincident (VGSI Angle 3.00/TCH 70).

KAVME

2500

3000

BLOCK

tr 138°

CALIF

GP 3.00°

TCH 52

See planview for multiple IF locations.

4.9 NM

RW09

CATEGORY	A	B	C	D
RNP 0.18 DA		1205/26	322 (400-½)	
RNP 0.30 DA		1275/35	392 (400-¾)	
AUTHORIZATION REQUIRED				

HIRL all Rwys

TDZ/CL all Rwys except 27