

RNAV (RNP) Z RWY 36C  
CINCINNATI/NORTHERN KENTUCKY INTL (CVG)

ALSF-2

ALSP-Z

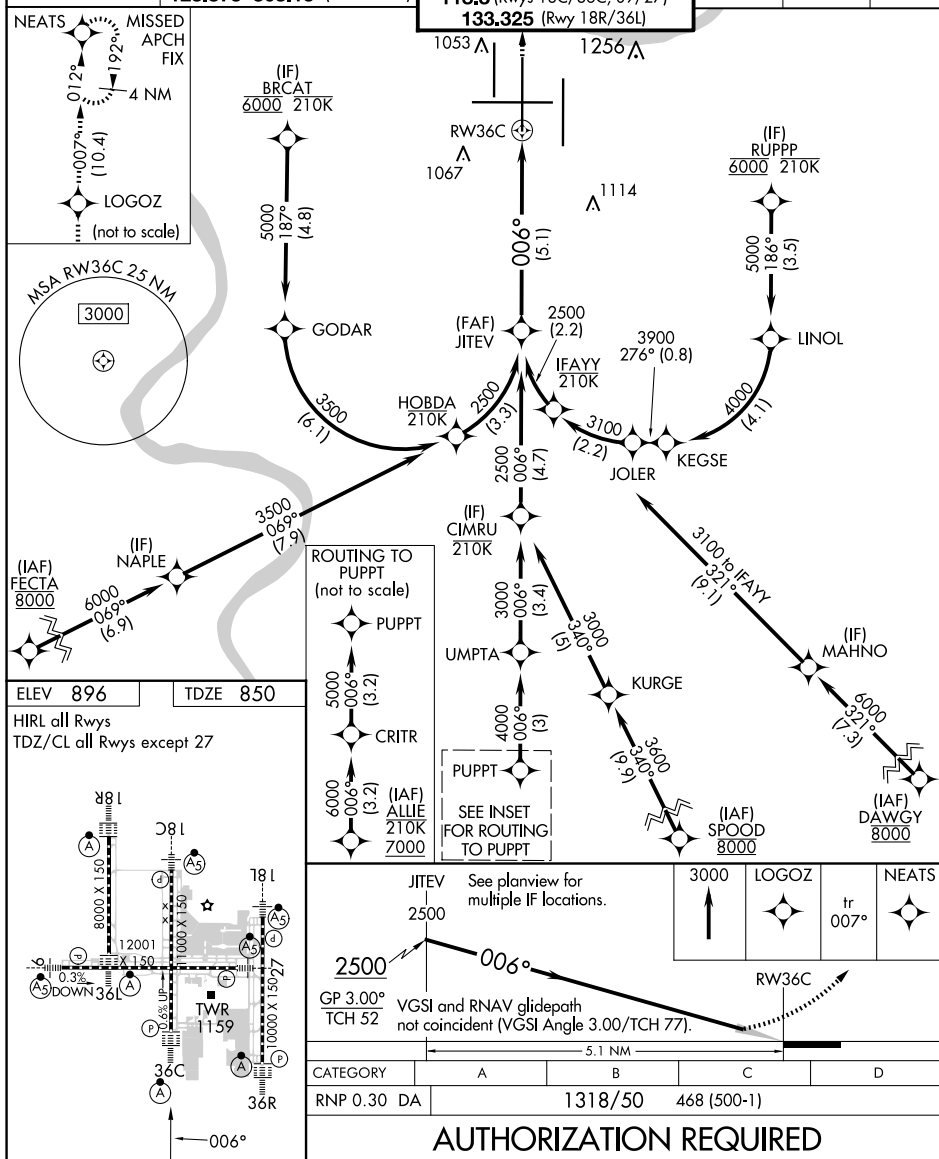
**MISSED APPROACH:** Climb to 3000 direct LOGOZ and on track 007° to NEATS and hold.

CINCINNATI TOWER  
**118.975 360.85** (Rwy 18L/36R)  
**118.3** (Rwys 18C/36C 09/27)

	GND CO
--	--------

CLNC DEL  
107-177

CPDLC



Amdt 1 12JUN25

CINCINNATI/NORTHERN KENTUCKY INTL (CVG)

39°03'N-84°40'W

RNAV (RNP) Z RWY 36C

SE-1, 10 JUL 2025 to 07 AUG 2025