

APP CRS  
**186°**

Rwy Ldg  
TDZE  
Apt Elev  
**8000**  
**868**  
**896**

RNAV (RNP) Z RWY 18R

CINCINNATI/NORTHERN KENTUCKY INTL (CVG)

RNP AR APCH - GPS. Authorization required. From RANGL or TARZI: RF

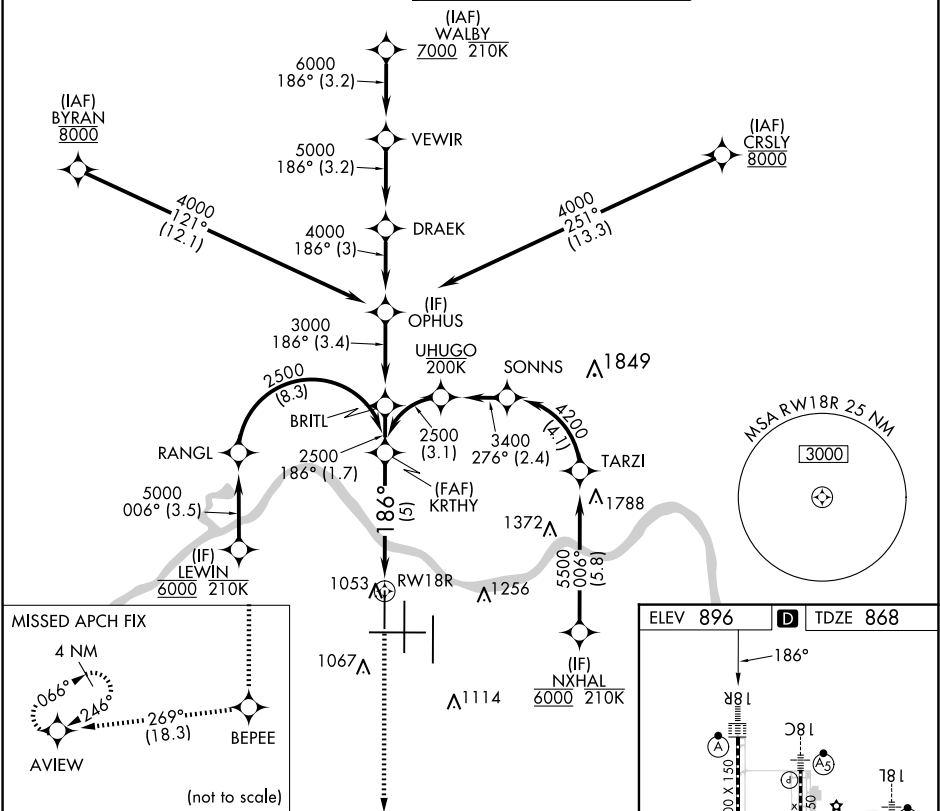
ALSF-2

MISSED APPROACH: Climb to 3000 direct BEPEE and on track 269° to AVIEW and hold.

For uncompensated Baro-VNAV systems, procedure NA below -14°C or above 54°C. Simultaneous approach authorized. For inop ALS, increase RNP 0.30 all Cats visibility to RVR 5500.

ALSF-2

D-ATIS		CINCINNATI APP CON		CINCINNATI TOWER		GND CON	CLNC DEL	CPDLC
ARR	DEP	<b>119.7</b>	<b>363.15</b> (090°-269°)	<b>118.975</b>	<b>360.85</b> (RWY 18L/36R)	<b>121.7</b>	<b>127.175</b>	
<b>134.375</b>	<b>135.3</b>	<b>123.875</b>	<b>363.15</b> (270°-089°)	<b>118.3</b> (RWYS 18C/36C, 09/27)				
				<b>133.325</b> (RWY 18R/36L)				



3000 BEPEE tr 269° AVIEW

See planview for multiple IF locations.

KRTHY 2500

RWY 18R 186° 2500

GP 3.00° TCH 58

CATEGORY	A	B	C	D
RNP 0.30 DA		1238/35	370 (400-%)	

**AUTHORIZATION REQUIRED**

COVINGTON, KENTUCKY

Amdt 1 12JUN25

CINCINNATI/NORTHERN KENTUCKY INTL (CVG)

39°03'N-84°40'W

**RNAV (RNP) Z RWY 18R**

ELEV 896

**D** TDZE 868

SE-1, 10 JUL 2025 to 07 AUG 2025

SE-1, 10 JUL 2025 to 07 AUG 2025