

APP CRS
186°

Rwy Ldg
10000

TDZE
889

Apt Elev
896

RNAV (RNP) Z RWY 18L

CINCINNATI/NORTHERN KENTUCKY INTL (CVG)

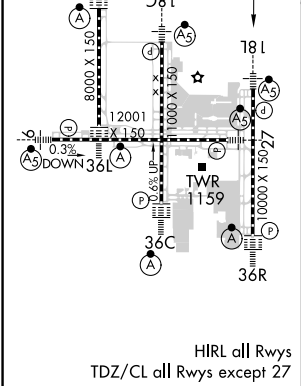
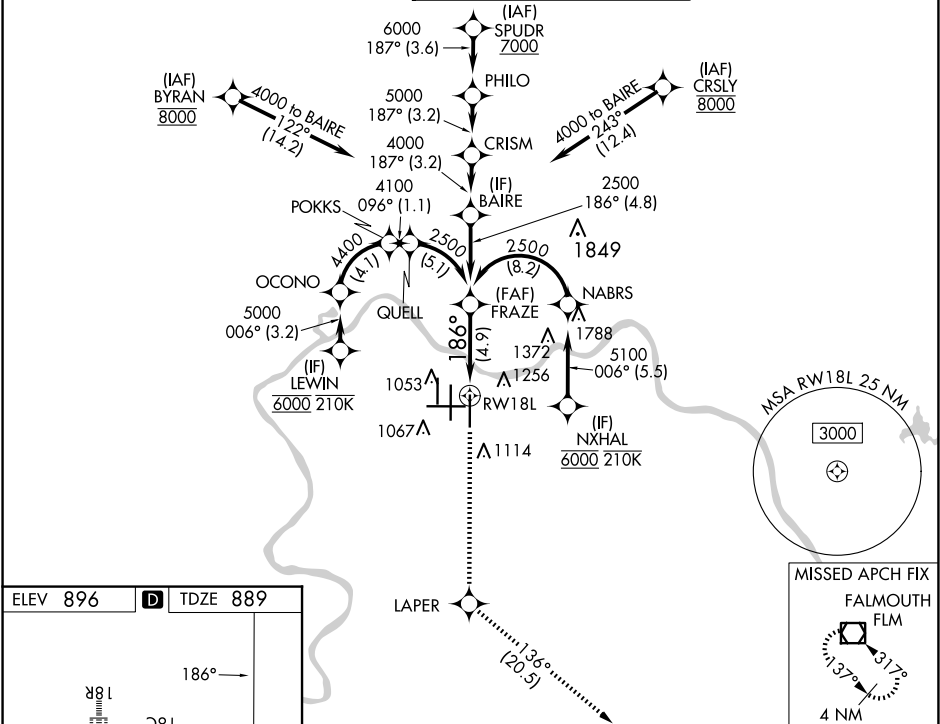
RNP AR APCH - GPS. Authorization required. From NABRS or OCONO: RF.

MALSR

MISSED APPROACH: Climb to 3000 direct LAPER and on track 136° to FLM VOR/DME and hold.

For uncompensated Baro-VNAV systems, procedure NA below -14°C or above 54°C. For inop ALS, increase RNP 0.25 all Cats visibility to 5500 and increase RNP 0.30 all Cats visibility to 1 3/4 SM. Simultaneous approach authorized.

D-ATIS	CINCINNATI APP CON	CINCINNATI TOWER	GND CON	CLNC DEL	CPDLC
ARR 134.375	DEP 135.3	119.7 363.15 (090°-269°) 123.875 363.15 (270°-089°)	118.975 360.85 (RWY 18L/36R) 118.3 (RWYS 18C/36C, 09/27) 133.325 (RWY 18R/36L)	121.7	127.175



3000

LAPER

tr 136°

FLM

VGSI and RNAV glidepath not coincident (VGSI Angle 3.00°/TCH 71).

See planview for multiple IF locations.

GP 3.00°

TCH 55

CATEGORY	A	B	C	D
RNP 0.25 DA		1240/30	351 (400-5%)	
RNP 0.30 DA		1388/50	499 (500-1)	

AUTHORIZATION REQUIRED