

APP CRS
186°


Rwy Ldg **11000**
TDZE **875**
Apt Elev **896**

RNAV (RNP) Z RWY 18C

CINCINNATI/NORTHERN KENTUCKY INTL (C'VG)

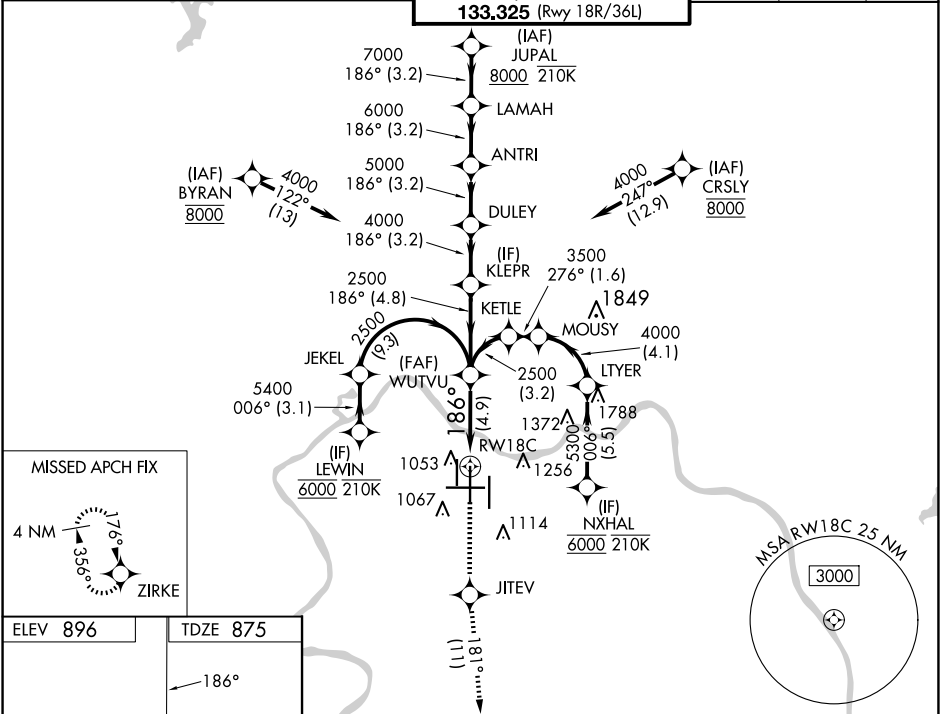
RNP AR APCH - GPS. Authorization required. From JEKEL or LTYER: RF.

For uncompensated Baro-VNAV systems, procedure NA below -14°C or above 54°C.
For inop ALS, increase RNP 0.15 all Cats visibility to RVR 4500 and RNP 0.30 all
Cats visibility to 1½ SM. Simultaneous approach authorized.

MALSR


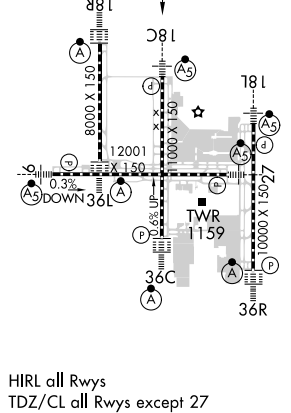
MISSED APPROACH: Climb to 3000 direct JITEV and on track 181° to ZIRKE and hold.

D-ATIS	CINCINNATI APP CON	CINCINNATI TOWER	GND CON	CLNC DEL	CPDLC
ARR 134.375	DEP 135.3	118.975 360.85 (Rwy 18L/36R) 118.3 (Rwys 18C/36C, 9/27) 133.325 (Rwy 18R/36L)	121.7	127.175	



ELEV 896

TDZE 875



HIRL all Rwys
TDZ/CL all Rwys except 27

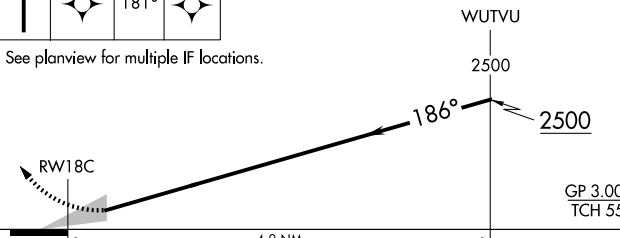
3000

JITEV

ZIRKE

VGSI and RNAV glidepath not coincident
(VGSI Angle 3.00/TCH 71).

See planview for multiple IF locations.



GP 3.00°
TCH 55

CATEGORY	A	B	C	D
RNP 0.15 DA		1190/24	315 (300-½)	
RNP 0.30 DA		1389/55	514 (500-1)	

AUTHORIZATION REQUIRED