

LOC I-JDP

108.7

APP CRS

276°

Rwy Ldg

12000

TDZE

875

Apt Elev

896

ILS or LOC RWY 27

CINCINNATI/NORTHERN KENTUCKY INTL (CVG)

RNP APCH - GPS. From FISBU, BREWZ, ZALED or YEYUP.

RADAR required for procedure entry at KAYDE.

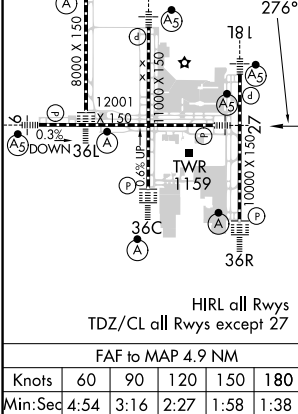
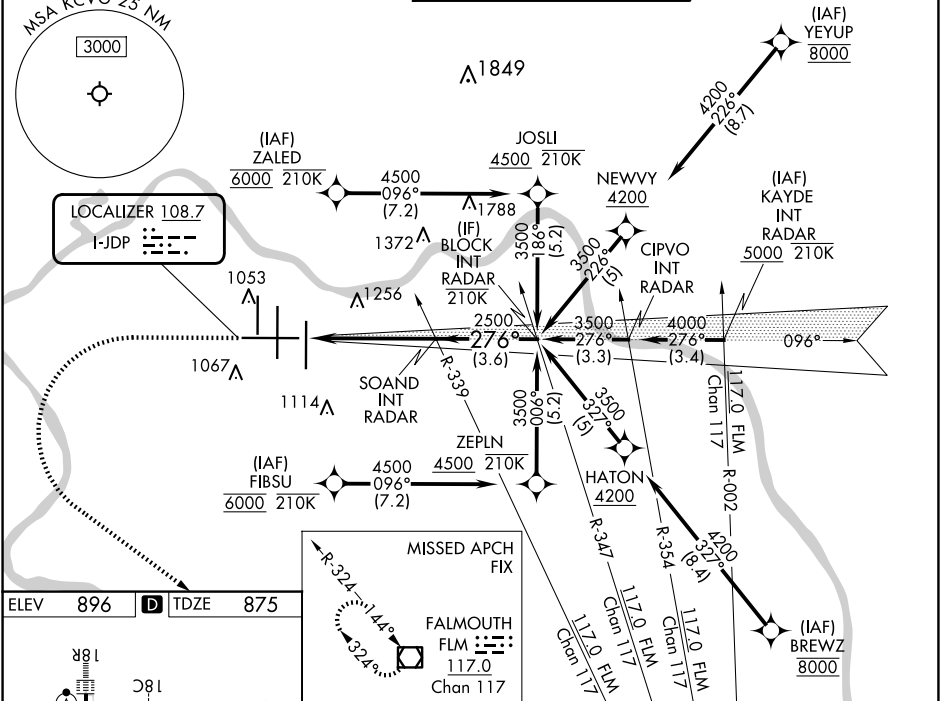
▼

For inop ALS, increase S-LOC 27 Cat C/D visibility to 1½ SM.
*RVR 1800 authorized with use of FD or AP or HUD to DA.

MALSR

MISSED APPROACH: Climb to 2000 then climbing left turn to 3000 direct FLM
VOR/DME and hold.

D-ATIS		CINCINNATI APP CON		CINCINNATI TOWER		GND CON	CLNC DEL	CPDLC
ARR	DEP	119.7	363.15 (090°-269°)	118.975	360.85 (RWY 18L/36R)	121.7	127.175	
134.375	135.3	123.875	363.15 (270°-089°)	118.3	(RWYS 18C/36C, 09/27)			
				133.325	(RWY 18R/36L)			



CATEGORY		A	B	C	D
S-ILS 27*		1075/24		200 (200-½)	
S-LOC 27		1340/24	465 (500-½)	1340/50	465 (500-1)
CIRCLING		1460-1	564 (600-1)	1560-1¾ 664 (700-1¾)	1560-2 664 (700-2)