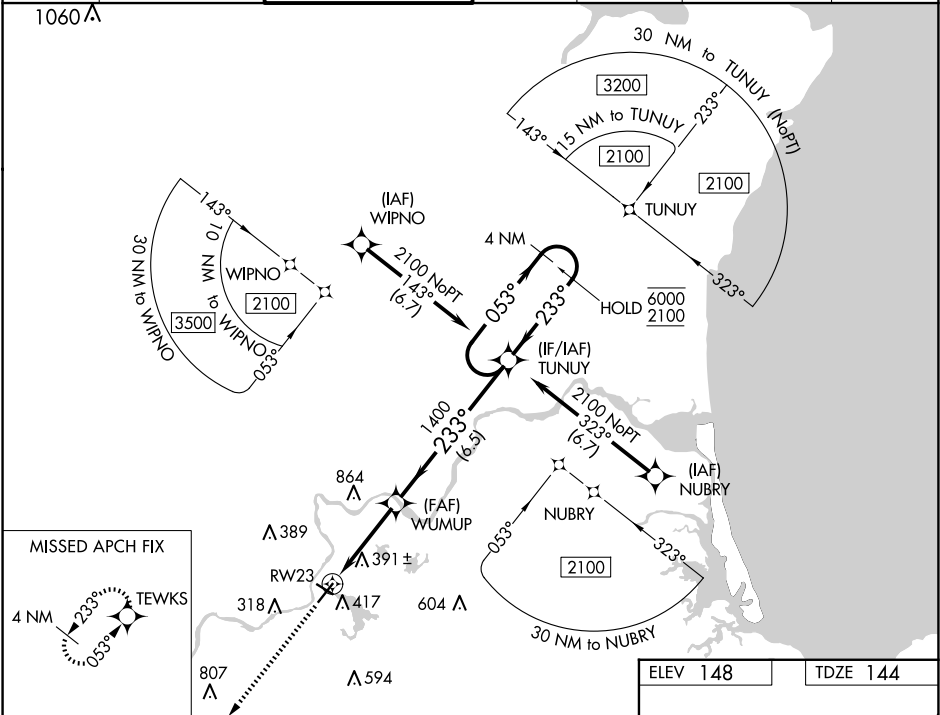


WAAS CH 61022 W23A	APP CRS 233°	Rwy Ldg TDZE 144 Apt Elev 148
--	------------------------	---

RNAV (GPS) RWY 23

LAWRENCE MUNI (LWM)

RNP APCH - GPS					MISSED APPROACH: Climb to 2000 direct TEWKS and hold.	
⚠ Rwy 23 helicopter visibility reduction below ¾ SM NA. Circling Rwy 32 NA at night. For uncompensated Baro-VNAV systems, LNAV/VNAV NA below -16°C or above 54°C.						
ATIS 126.75	BOSTON APP CON 124.4 279.6	LAWRENCE TOWER ★ 119.25 (CTAF) 0	GND CON 124.3	CLNC DEL 124.3	CLNC DEL 126.15 (When twr closed)	UNICOM 122.8



2000

↑

TEWKS

✦

VGSI and RNAV glidepath not coincident
(VGSI Angle 3.70/TCH 55).

4 NM Holding Pattern

TUNUY

053° → 6000

← 233° 2100

WUMUP

1400

1.2 NM to RW23

1400

233°

GP 3.10° TCH 55

1.2 NM

2.5 NM

6.5 NM

RW23

CATEGORY	A	B	C	D
LPV DA	562-1 ⅞		418 (500-1 ⅞)	
LNAV/VNAV DA	660-1 ¾		516 (600-1 ¾)	
LNAV MDA	660-1	516 (600-1)	660-1 ¾	516 (600-1 ¾)
CIRCLING	740-1	592 (600-1)	920-2 ¼ 772 (800-2 ¼)	1220-3 1072 (1100-3)

