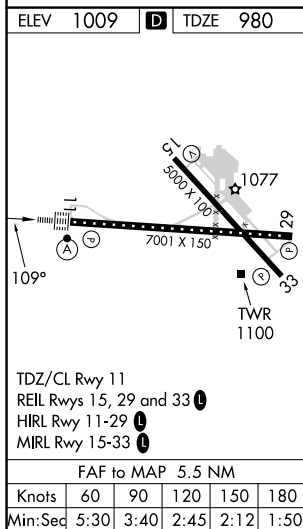
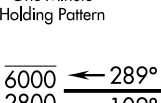
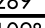



ILS or LOC RWY 11
WORCESTER RGNL (ORH)

- ALSF-2

MISSED APPROACH: Climb to 1800 then climbing right turn to 3100 on heading 230° and on GDM VOR/DME R-167 to LAWNRN/GDM 23 DME and hold, continue climb-in-hold to 3100.



<div>One Minute Holding Pattern</div> 		<div>RILOC INT I-RSR <u>5.5</u></div> <div>2800</div>	<div>1800</div> <div></div>	<div>3100</div> <div> hdg 230°</div>	<div>GDM R-167</div>	<div>LAWRN GDM <u>23</u></div>
<div>GS 3.00° TCH 55</div>		<div>6000 2800</div> <div>289°</div> <div>109°</div> <div>2800</div> <div></div>	<div>2800</div> <div>109°</div> <div>4.1 NM</div> <div>1.4 NM</div> <div>0.1 NM</div> <div></div>	<div>I-RSR <u>1.4</u></div> <div>IM</div>		
CATEGORY	A	B	C	D		
S-ILS 11	1180/18 200 (200-½)					
S-LOC 11	1500/24 520 (500-½)	1500/55 520 (500-1)				
C CIRCLING	1560-1 551 (600-1)	1740-1 731 (800-1)	2000-3 991 (1000-3)			

NE-1, 10 JUL 2025 to 07 AUG 2025