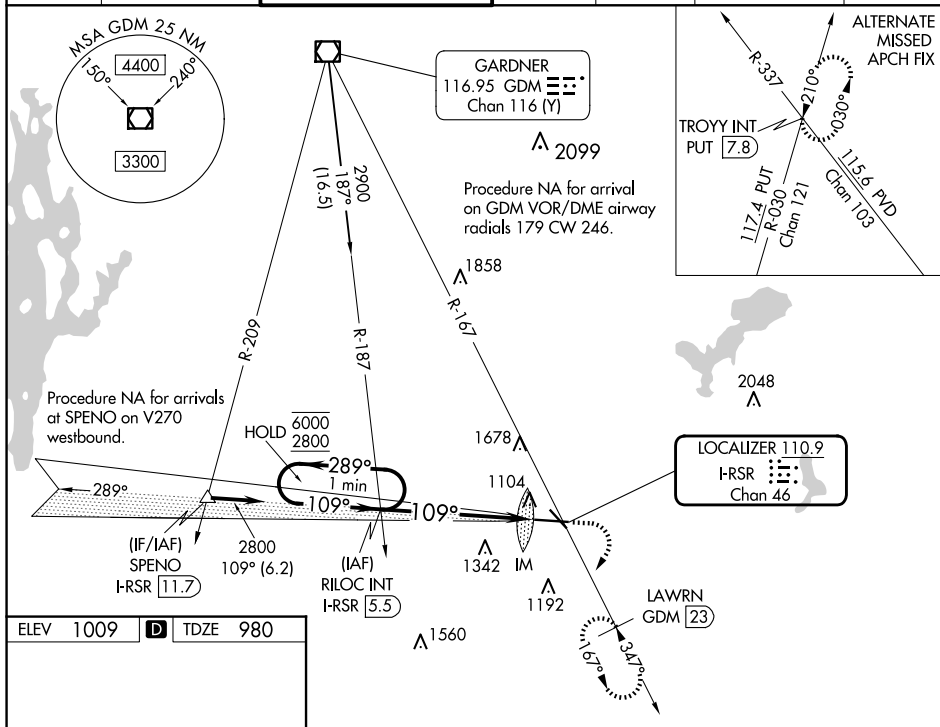


ILS RWY 11 (CAT II & III)
WORCESTER RGNL (ORH)

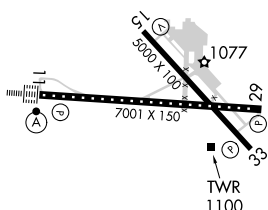
ALSF-2

MISSED APPROACH: Climb to 1800 then climbing right turn to 3100 on heading 230° and on GDM VOR/DME R-167 to LAWRN/GDM 23 DME and hold, continue climb-in-hold to 3100.

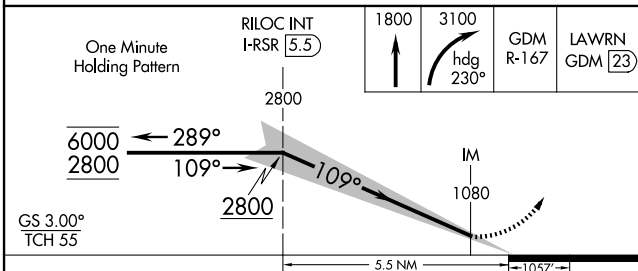
ATIS 126.55	BRADLEY APP CON 119.0 327.1	WORCESTER TOWER★ 120.5 (CTAF) 0 263.0	GND CON 123.85	CLNC DEL 128.65	CLNC DEL 119.0 (When twr closed)	UNICOM 122.95
-----------------------	---------------------------------------	---	--------------------------	---------------------------	---	-------------------------



ELEV 1009	D	TDZE 980
-----------	----------	----------



TDZ/CL Rwy 11
REIL Rwy 15, 29 and 33 **L**
HIRL Rwy 11-29 **L**
MIRL Rwy 15-33 **L**



CATEGORY	A	B	C	D
S-ILS 11	CAT II RA 119/12 100 DA 1080			
S-ILS 11	CAT III RVR 06			

CATEGORY II & III ILS - SPECIAL AIRCREW
& AIRCRAFT CERTIFICATION REQUIRED

NE-1, 10 JUL 2025 to 07 AUG 2025