


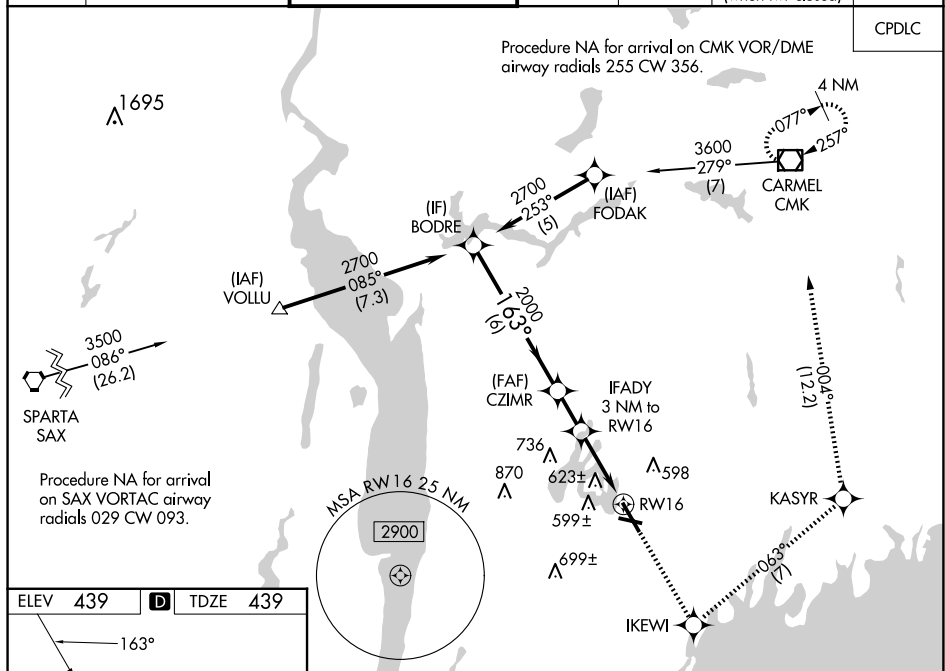


WAAS CH 69519 W16A	APP CRS 163°	Rwy Idg 6549 TDZE 439 Apt Elev 439
--	------------------------	---

RNAV (GPS) Y RWY 16

WESTCHESTER COUNTY (HPN)

 <p>For uncompensated Baro-VNAV systems, LNAV/VNAV NA below -15°C (5°F) or above 54°C (130°F). Circling Rwy 11, 29 NA at night. DME/DME RNP-0.3 NA.</p>		<p>MALSR</p> 		<p>MISSED APPROACH: Climb to 2300 direct IKEWI and left turn on track 063° to KASYR and on track 004° to CMK VOR/DME and hold.</p>		
<p>D-ATIS 133.8</p>	<p>NEW YORK APP CON 120.8 126.4 257.65</p>	<p>WESTCHESTER TOWER ★ 118.575 (CTAF)  284.65</p>	<p>GND CON 121.825</p>	<p>CLNC DEL 127.25</p>	<p>CLNC DEL 126.4 (when twr closed)</p>	<p>UNICOM 122.95</p>



CATEGORY	A	B	C	D	
LPV DA	689/24		250 (300-½)		
INAV/ VNAV DA	978-1½		539 (600-1½)		
INAV MDA	1060/24	621 (700-½)	1060/60 621 (700-¼)	1060-1½ 621 (700-1½)	
C CIRCLING	1060-1	621 (700-1)	1080-1¾ 641 (700-¼)	1200-2½ 761 (800-2½)	

NE-2, 10 JUL 2025 to 07 AUG 2025