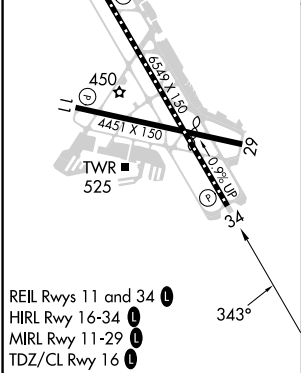
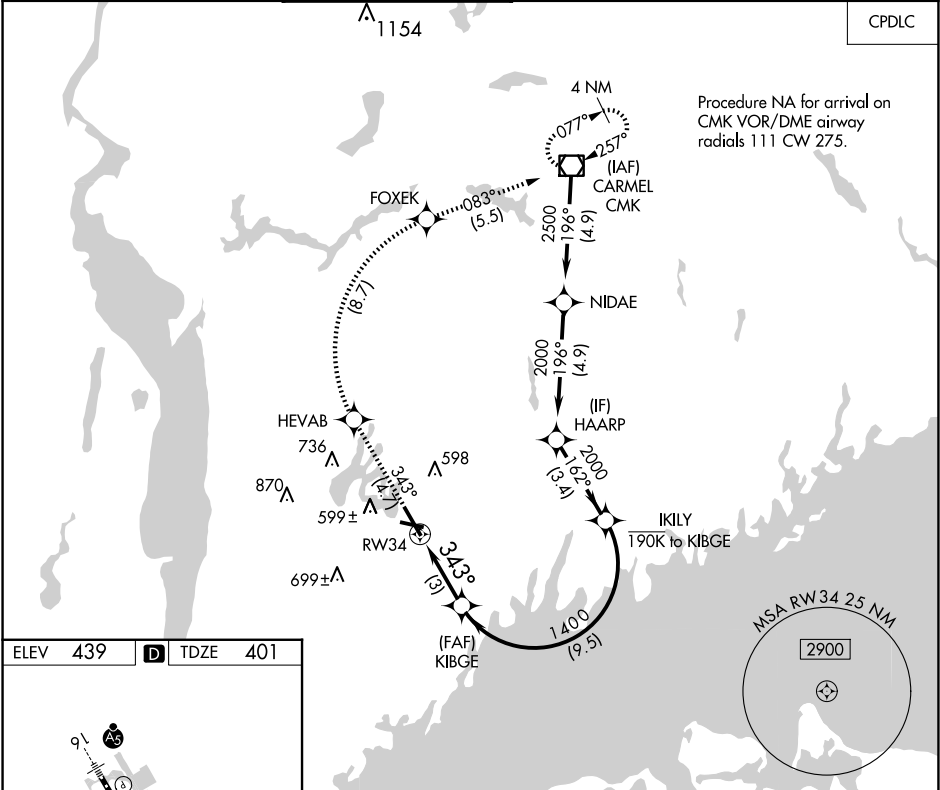



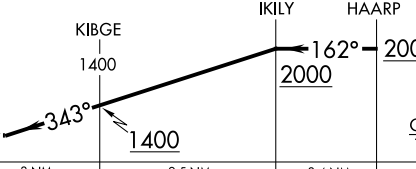


APP CRS	Rwy Idg	6549
343°	TDZE	401
	Apt Elev	439

RNAV (RNP) Z RWY 34
WESTCHESTER COUNTY (HPN)

<div><div></div><div>For uncompensated Baro-VNAV systems, procedure NA below -14°C (7°F) or above 54°C (130°F). RF required. GPS required.</div></div>	<div>MISSED APPROACH: Climb to 3000 on track 343° to HEVAB, right turn to FOXEK, then on track 083° to CMK VOR/DME and hold.</div>				
D-ATIS	NEW YORK APP CON	WESTCHESTER TOWER ★	GND CON	CLNC DEL	CLNC DEL
133.8	120.8 126.4 257.65	118.575 (CTAF) 0 284.65	121.825	127.25	126.4 (when twr closed)
					UNICOM 122.95



3000		tr 343°	HEVAB		FOXEK	tr 083°	CMK		VGSI and RNAV glidepath not coincident (VGSI Angle 3.00/TCH 56).
									
CATEGORY	A		B		C		D		
RNP 0.30 DA	788-1 3/8				387 (400-1 3/8)				
AUTHORIZATION REQUIRED									

NE-2, 10 JUL 2025 to 07 AUG 2025

NE-2, 10 JUL 2025 to 07 AUG 2025