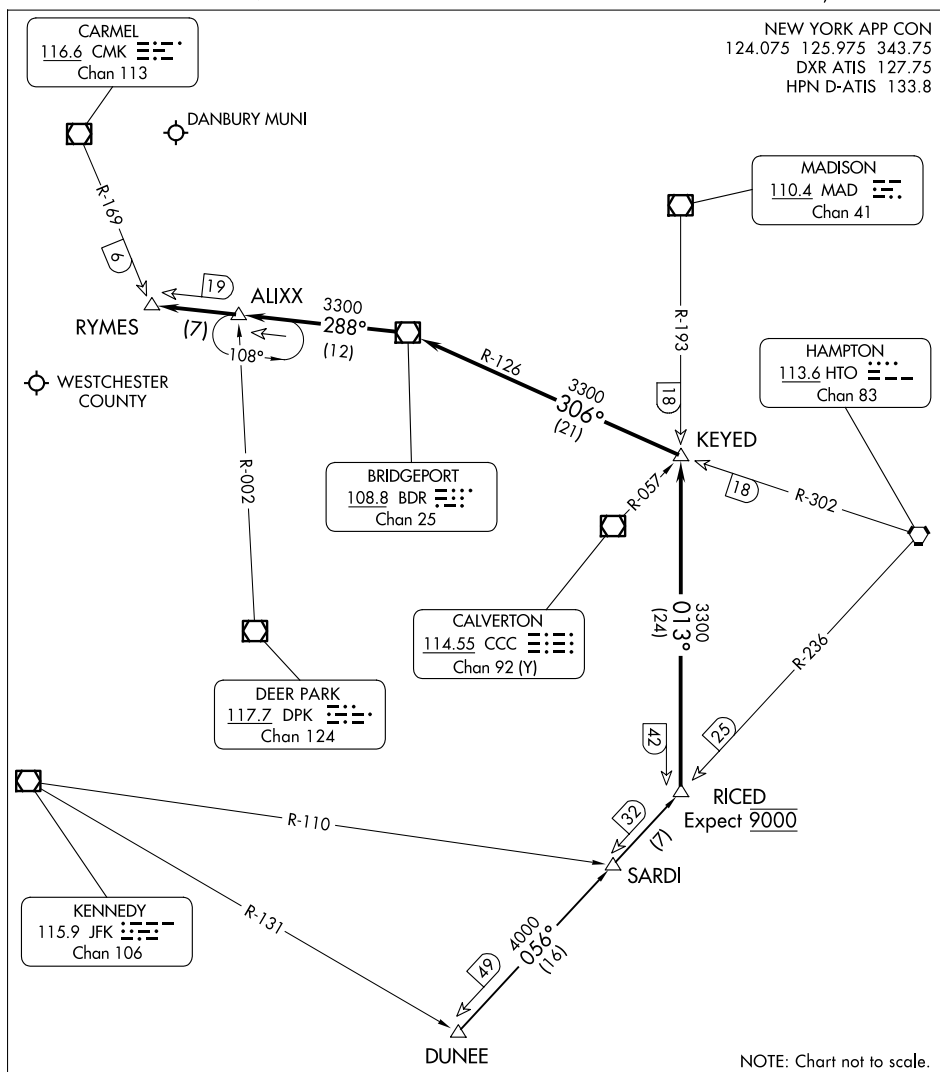


## RICED FOUR ARRIVAL

WHITE PLAINS, NEW YORK



## ARRIVAL ROUTE DESCRIPTION

DUNEE TRANSITION (DUNEE.RICED4): From over DUNEE INT via HTO R-236 to RICED INT, thence. . .

. . . from over RICED INT via MAD R-193 to intercept BDR R-126 to BDR VOR/DME then via BDR R-288 to RYMES INT. Expect RADAR vectors to final approach course.

## RICED FOUR ARRIVAL

WHITE PLAINS, NEW YORK