

LOC/DME I-OJZ	APP CRS	Rwy Idg
109.7	343°	6549
Chan 34		TDZE 401
		Apt Elev 439

ILS or LOC RWY 34

WESTCHESTER COUNTY (HPN)

RADAR required for procedure entry.

▼

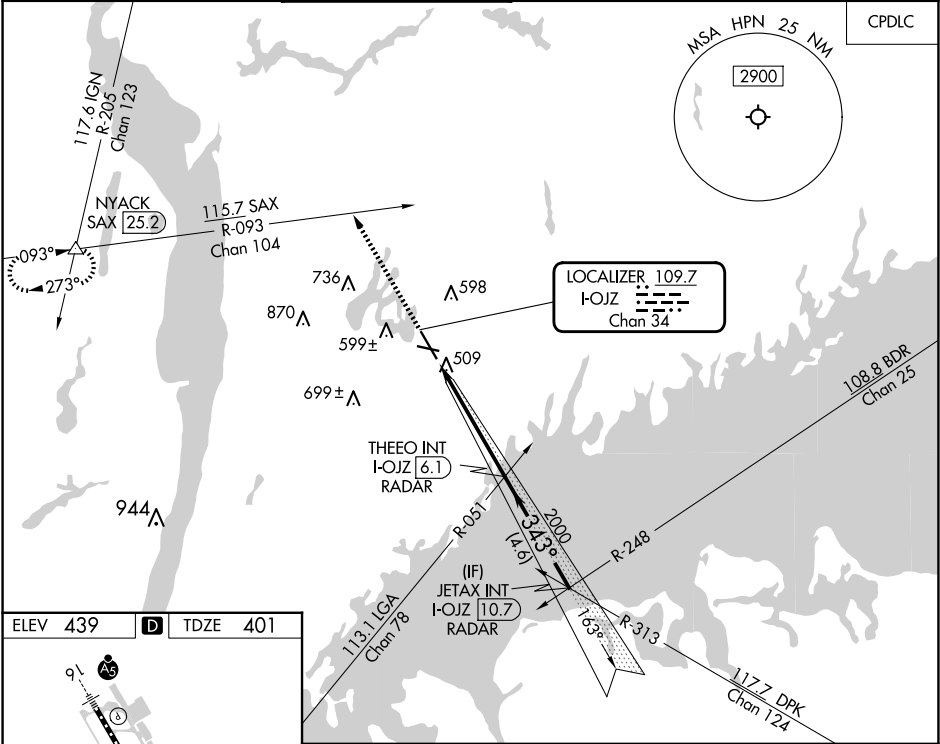
⚠

Circling Rwy 11, 29 NA at night.

Rwy 34 helicopter visibility reduction below ¾ SM NA.

MISSED APPROACH: Climb to 3000 on heading 343° and SAX R-093 to NYACK INT/SAX 25.2 DME and hold.

D-ATIS	NEW YORK APP CON	WESTCHESTER TOWER ★	GND CON	CLNC DEL	CLNC DEL	UNICOM
133.8	120.8 126.4 257.65	118.575 (CTAF) 0 284.65	121.825	127.25	126.4 (when twr closed)	122.95



ELEV 439 D TDZE 401

REIL Rwy 11 and 34
HIRL Rwy 16-34
MIRL Rwy 11-29
TDZ/CL Rwy 16

FAF to MAP 4.9 NM

Knots	60	90	120	150	180
Min:Sec	4:54	3:16	2:27	1:58	1:38

3000

SAX R-093

NYACK INT

THEEO INT I-OJZ 6.1 RADAR

JETAX INT I-OJZ 10.7 RADAR

hdg 343°

*LOC only

I-OJZ 1.2

*I-OJZ 2.3

2000

343°

2000

GS 3.00°

TCH 55

1.2 NM

3.7 NM

4.6 NM

CATEGORY	A	B	C	D
S-ILS 34	742/60 341 (400-1¼)			
S-LOC 34	800/55 399 (400-1)		800/60 399 (400-1¼)	
✻ CIRCLING	980-1 541 (600-1)		1080-1¾ 641 (700-1¾) 1200-2½ 761 (800-2½)	