

LOC/DME I-HPN 109.7 Chan 34	APP CRS 163°	Rwy Idg 6549 TDZE 439 Apt Elev 439	ILS RWY 16 (SA CAT I & II) WESTCHESTER COUNTY (HPN)	
---	------------------------	---	--	--

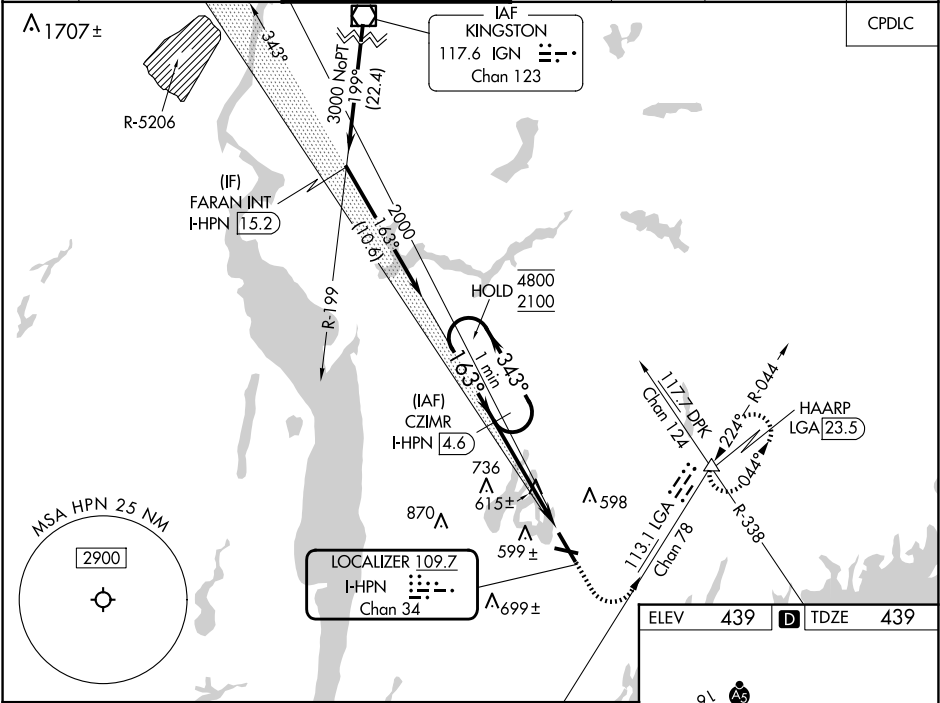
SA CAT I: Requires specific OPSPEC, MSPEC, or LOA approval and use of HUD to DH.

SA CAT II: Reduced lighting: Requires specific OPSPEC, MSPEC, or LOA approval and use of autoland or HUD to touchdown. Procedure NA when tower closed.

MALSR

MISSED APPROACH: Climb to 1000 then climbing left turn to 3000 on heading 150° and LGA VOR/DME R-044 to HAARP INT/LGA 23.5 DME and hold, continue climb-in-hold to 3000.

D-ATIS 133.8	NEW YORK APP CON 120.8 126.4 257.65	WESTCHESTER TOWER ★ 118.575 (CTAF) 0 284.65	GND CON 121.825	CLNC DEL 127.25	CLNC DEL 126.4 (when twr closed)	UNICOM 122.95
------------------------	---	--	---------------------------	---------------------------	---	-------------------------



One Minute Holding Pattern

GS 3.00° TCH 55

4.7 NM

CATEGORY	A	B	C	D
S-ILS 16	SA CAT I RA 198/14		150 DA 589	
S-ILS 16	SA CAT II RA 113/12		100 DA 539	

SA CATEGORY I & II SPECIAL AIRCREW & AIRCRAFT CERTIFICATION REQUIRED

MIRL Rwy 11-29
HIRL Rwy 16-34
REIL Rws 11 and 34
TDZ/CL Rwy 16