

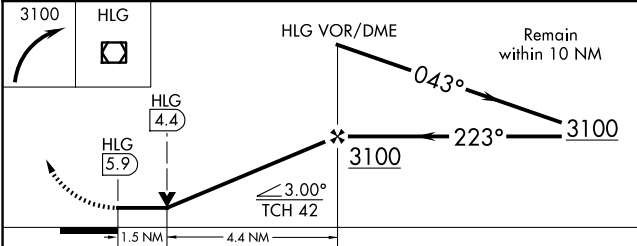
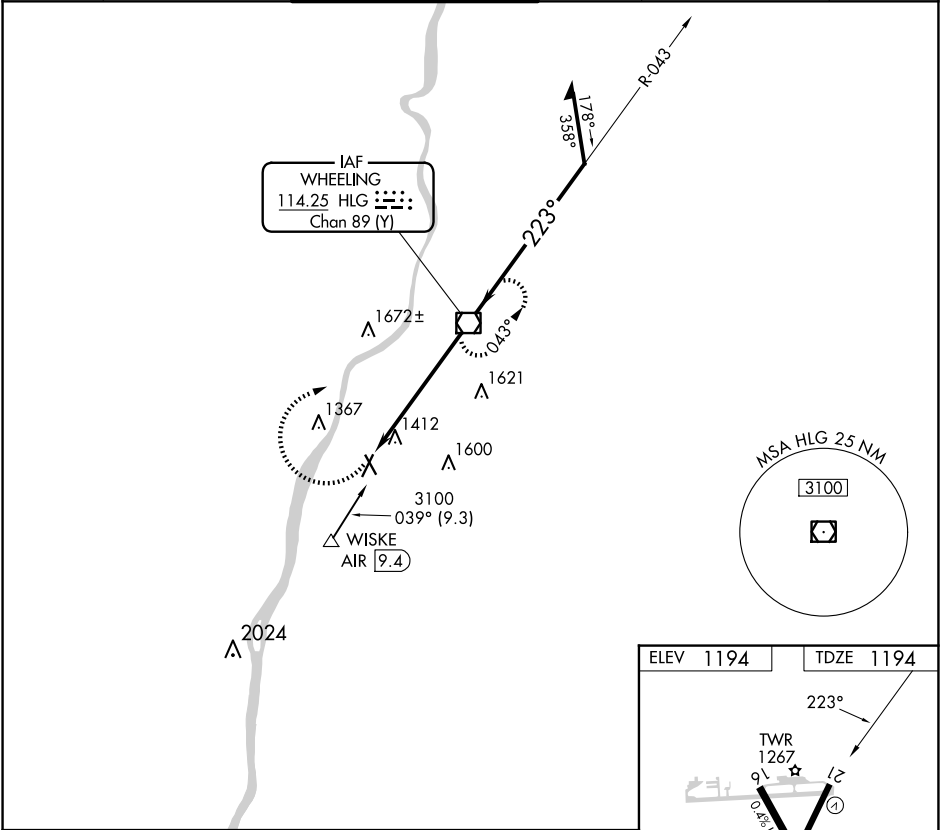
VOR/DME HLG	APP CRS	Rwy Idg	5002
114.25	223°	TDZE	1194
Chan 89 (Y)		Apt Elev	1194

VOR RWY 21  
WHEELING OHIO COUNTY (HLG)

Rwy 21 helicopter visibility reduction below RVR 4000 NA.

MISSED APPROACH: Climbing right turn to 3100 direct HLG VOR/DME and hold.

ASOS	PITTSBURGH APP CON	WHEELING TOWER ★	GND CON	CLNC DEL	UNICOM
127.375	125.275 285.575	118.1(CTAF) 257.8	121.75	125.275 (when twr closed)	122.95



ELEV 1194

TDZE 1194

HIRL Rwy 3-21

MIRL Rwy 16-34

REIL Rws 21 and 34

FAF to MAP 5.9 NM

Knots	60	90	120	150	180
Min:Sec	5:54	3:56	2:57	2:22	1:58

NE-4, 10 JUL 2025 to 07 AUG 2025

NE-4, 10 JUL 2025 to 07 AUG 2025