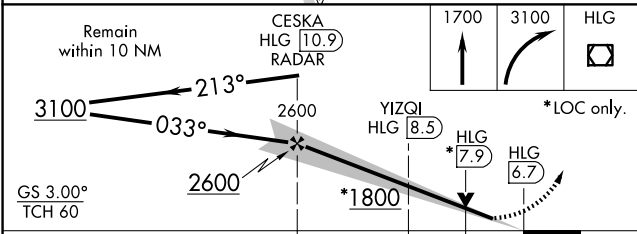
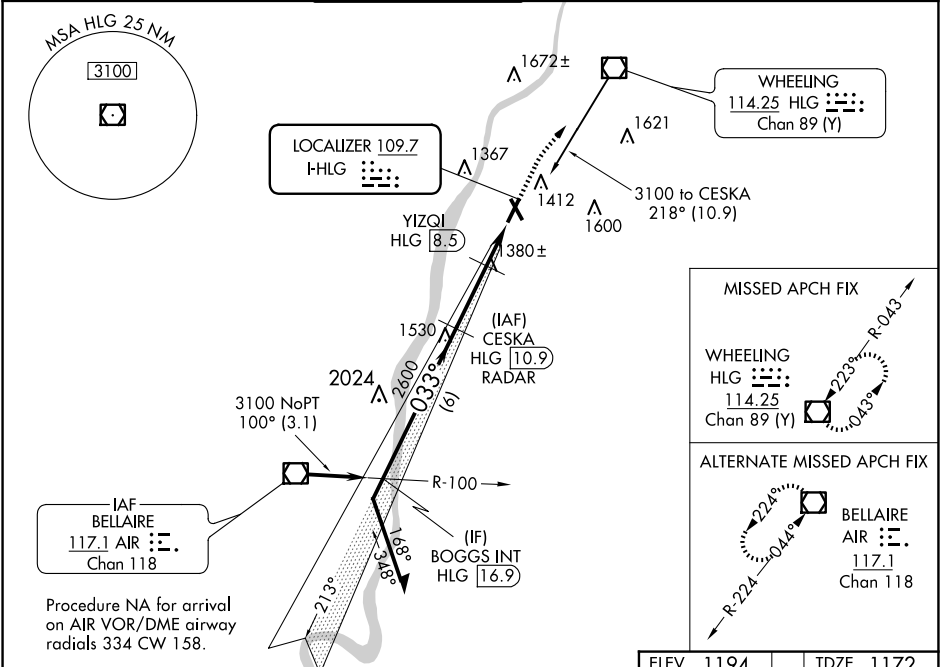


LOC I-HLG	APP CRS	Rwy Idg
109.7	033°	5002
		TDZE
		1172
		Apt Elev
		1194

ILS or LOC RWY 3

WHEELING OHIO COUNTY (HLG)

DME or RADAR required.		MALSF	MISSED APPROACH: Climb to 1700 then climbing right turn to 3100 direct HLG VOR/DME and hold. Continue climb-in-hold to 3100.		
Autopilot coupled approach NA below 1401. Inop table does not apply to S-ILS all Cats and S-LOC Cats A/B.					
ASOS	PITTSBURGH APP CON	WHEELING TOWER *	GND CON	CINC DEL	UNICOM
127.375	125.275 285.575	118.1(CTAF) 257.8	121.75	125.275 (when twr closed)	122.95



CATEGORY	A	B	C	D
S-ILS 3		1372/50	200 (200-1)	
S-LOC 3	1800/50	628 (700-1)	1800-1½	628 (700-1½)
CIRCLING	1800-1	606 (700-1)	1920-2 726 (800-2)	1920-2¼ 726 (800-2¼)
YIZQI FIX MINIMUMS				
S-LOC 3	1640/50	468 (500-1)	1640/60	468 (500-1¼)
CIRCLING	1720-1 526 (600-1)	1740-1 546 (600-1)	1920-2 726 (800-2)	1920-2¼ 726 (800-2¼)

