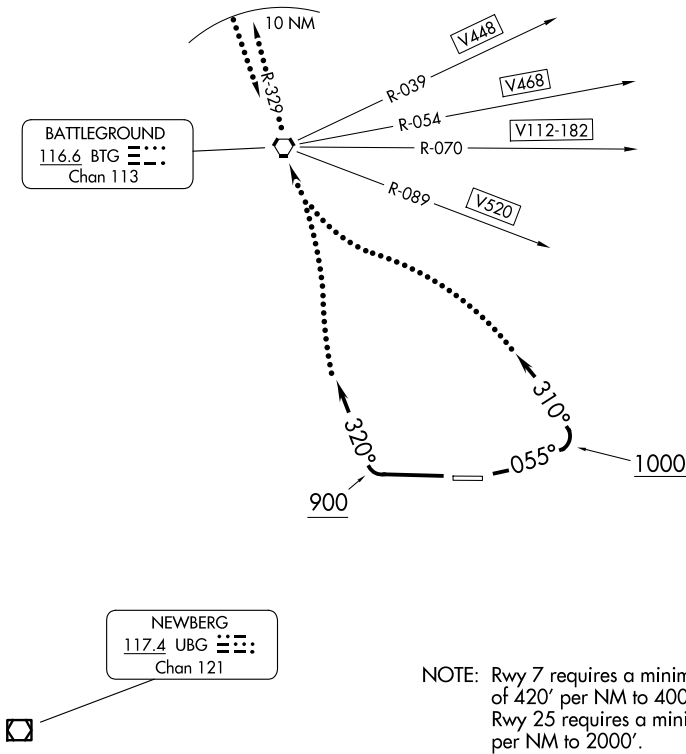


CTAF 120.9



NOTE: Rwy 7 requires a minimum climb gradient of 420' per NM to 4000'.
Rwy 25 requires a minimum climb of 310' per NM to 2000'.

NOTE: Chart not to scale.



DEPARTURE ROUTE DESCRIPTION

TAKEOFF RUNWAY 7: Climb via heading 055° to 1000', then turn left to 310° or as assigned.

TAKEOFF RUNWAY 25: Climb runway heading to 900', then turn right to 320° or as assigned.

LOST COMMUNICATIONS: Proceed direct to BTG VORTAC. Continue climb on the BTG R-329 within 10 NM to cross BTG VORTAC at or above: NE-bound V448, 9400'; NE-bound V468, 4500'; E-bound V112, V182, V520, 4700'; for non airways BTG R-355 CW BTG R-120, 8800'; all others, 2500'.

ALTERNATE LOST COMMUNICATIONS PROCEDURE: When BTG VORTAC is out of service: if no contact with ATC leaving 3000', continue climb to assigned altitude and proceed direct to UBG VOR/DME, thence via assigned route.

NW-1, 10 JUL 2025 to 07 AUG 2025

NW-1, 10 JUL 2025 to 07 AUG 2025