

WAAS CH 82010 W05A	APP CRS 053°	Rwy Idg TDZE Apt Elev	8002 666 668
--	------------------------	-----------------------------	---

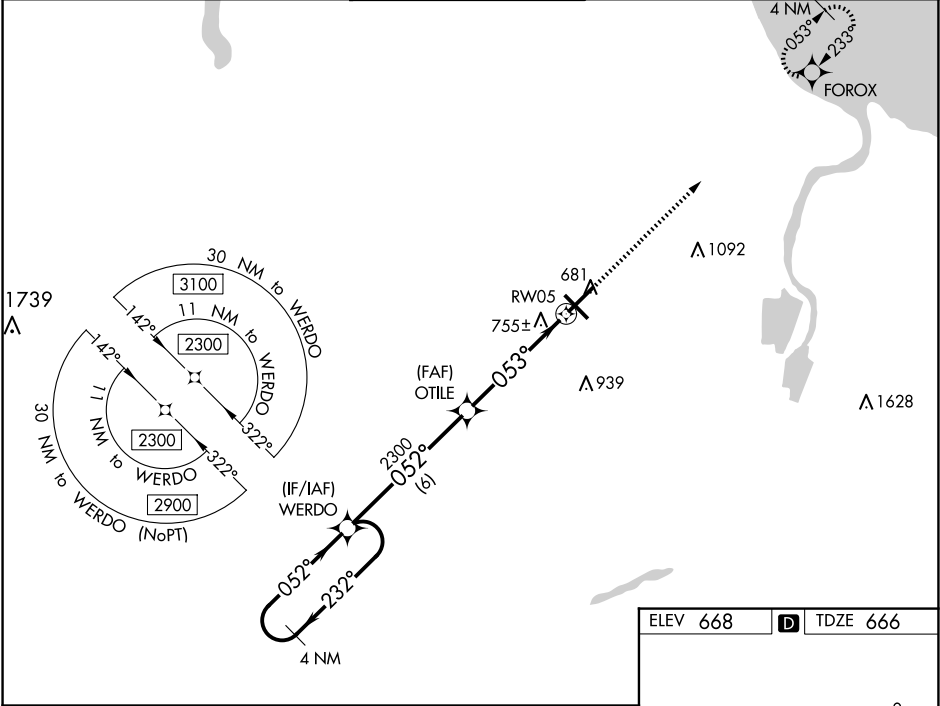
RNAV (GPS) RWY 5
MBS INTL (MBS)

⚠ For uncompensated Baro-VNAV systems, LNAV/VNAV NA below -18°C (0°F) or above 54°C (130°F). DME/DME RNP-0.3 NA. For inoperative ALS, increase LNAV/VNAV all Cats visibility to RVR 4500 and LNAV Cats C/D visibility to RVR 6000.
** RVR 1800 authorized with use of FD or AP or HUD to DA.

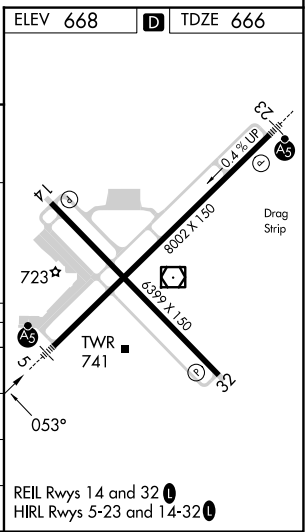
MALSR

MISSED APPROACH:
Climb to 2300 direct
FOROX and hold.

ATIS 125.925	GREAT LAKES APP CON★ 126.45 235.625	SAGINAW TOWER ★ 120.1(CTAF) 257.7	GND CON 121.7	CLNC DEL 121.85	UNICOM 122.95
------------------------	---	---	-------------------------	---------------------------	-------------------------



4 NM Holding Pattern					2300	FOROX
2300 ← 232° → 052° → 052° →					2300	
GP 3.00° TCH 50					2300	
6 NM					3.9 NM	1.1 NM
CATEGORY	A	B	C	D		
LPV DA**	866/24		200 (200-½)			
LNAV/ VNAV DA	955/24		289 (300-½)			
LNAV MDA	1080/24	414 (500-½)	1080/40	414 (500-¾)		
CIRCLING	1080-1 412 (500-1)	1120-1 452 (500-1)	1240-1½ 572 (600-1½)	1240-2 572 (600-2)		



EC-1, 10 JUL 2025 to 07 AUG 2025

EC-1, 10 JUL 2025 to 07 AUG 2025