

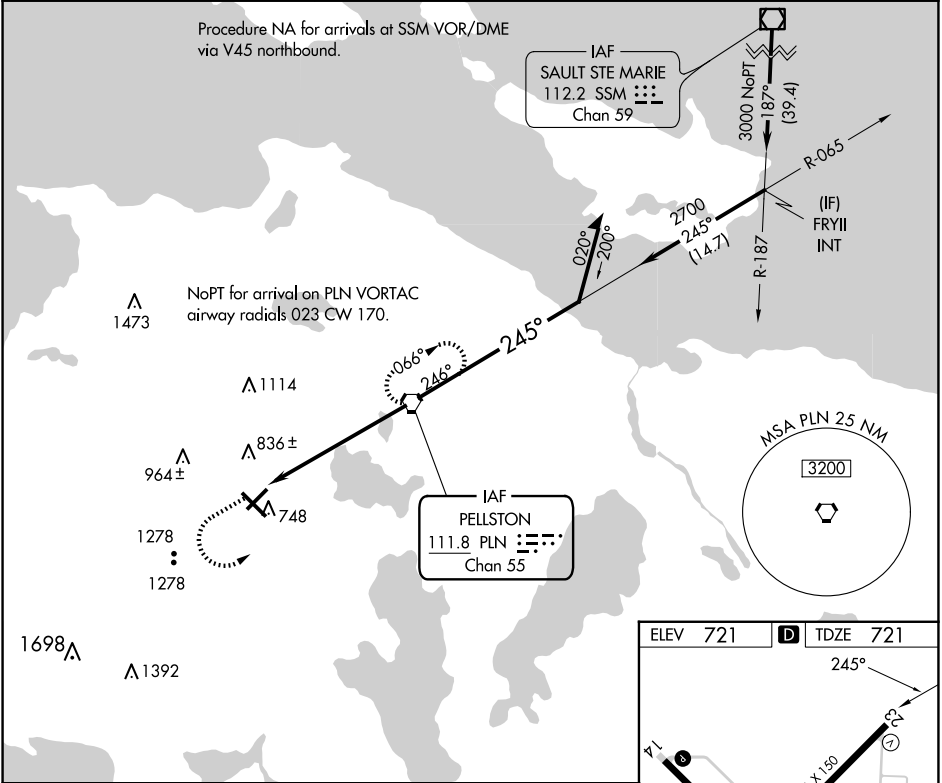
VORTAC PLN	APP CRS	Rwy Idg
111.8	245°	5395
Chan 55		TDZE 721
		Apt Elev 721

VOR RWY 23

PELLSTON RGNL/EMMET COUNTY (PLN)

<div><div>▼</div><div>▲</div></div> <div>When local altimeter setting not received, use Harbor Springs altimeter setting: increase all MDA 40 feet and visibility S-23 Cat C and D ¼ SM. Rwy 23 helicopter visibility reduction below 1 SM NA. Straight-in Rwy 23 NA at night, Circling Rwy 5, 14, 23 NA at night.</div>	MISSED APPROACH: Climb to 2000 then climbing left turn to 2800 direct PLN VORTAC and hold.
--	--

ASOS 119.025	MINNEAPOLIS CENTER 134.6 354.05	UNICOM 123.0 (CTAF) 0
------------------------	---	---------------------------------



2000

2800

PLN

PLN VORTAC

Remain within 10 NM

PLN 6.1

2700

245°

065°

2700

2.99°

TCH 45

6.1 NM

CATEGORY	A	B	C	D
S-23	1300-1	579 (600-1)	1300-1½ 579 (600-1½)	1300-1¾ 579 (600-1¾)
CIRCLING	1300-1 579 (600-1)	1320-1 599 (600-1)	1560-2½ 839 (900-2½)	1660-3 939 (1000-3)

ELEV 721

TDZE 721

245°

5401 X 150

6513 X 150

766

HIRL Rwy 14-32

MIRL Rwy 5-23

REIL Rwys 5, 14, and 23

FAF to MAP 6.1 NM

Knots	60	90	120	150	180
Min:Sec	6:06	4:04	3:03	2:26	2:02

EC-1, 10 JUL 2025 to 07 AUG 2025

EC-1, 10 JUL 2025 to 07 AUG 2025