

APP CRS
051°

Rwy Idg
TDZE
716

Apt Elev
721

RNAV (GPS) RWY 5

PELLSTON RGNL/EMMET COUNTY (PLN)

RNP APCH - GPS.

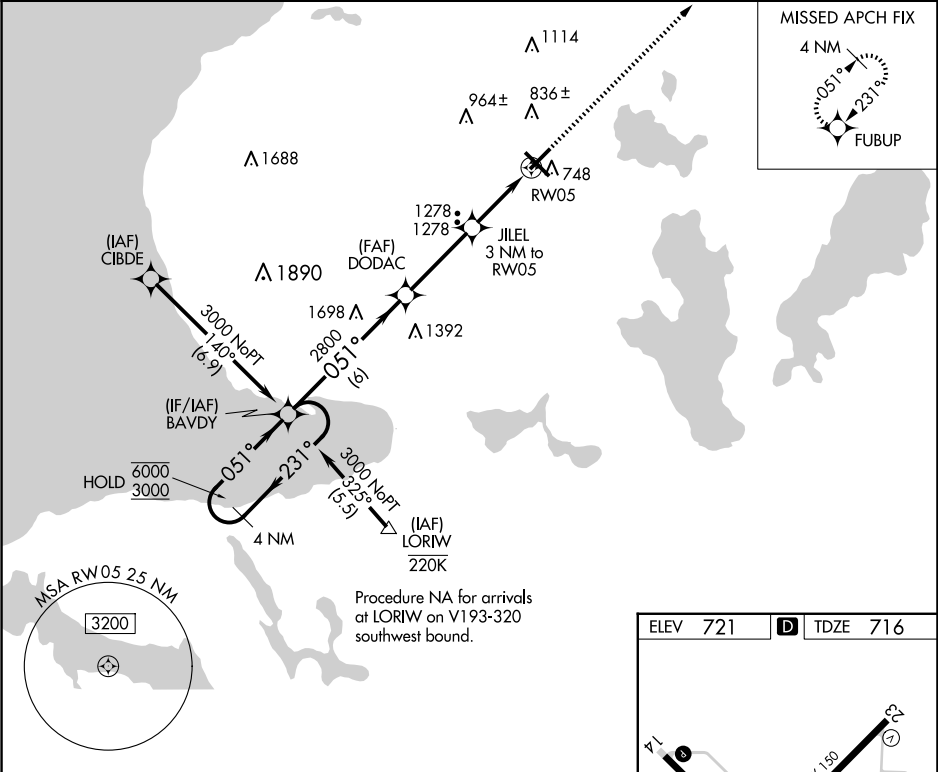
▼

⚠

Rwy 5 helicopter visibility reduction below 1 SM NA.
When local altimeter setting not received, use MGN altimeter setting and increase all MDAs 40 feet, and LNAV visibility Cat A ¼ SM.
Straight-in Rwy 5 NA at night, Circling Rwy 5, 14 NA at night.

MISSED APPROACH:
Climb to 2400 direct FUBUP and hold.

ASOS 119.025	MINNEAPOLIS CENTER 134.6 354.05	UNICOM 123.0 (CTAF) 0
------------------------	---	---------------------------------



4 NM Holding Pattern

BAVDY

2400 FUBUP

6000 3000

← 231°

051° →

051°

2800

1720

3.00 TCH 48

JILEL 3 NM to RW05

RW05

6 NM

3.4 NM

3 NM

CATEGORY	A	B	C	D
LNAV MDA	1560-1 844 (900-1)	1560-1¼ 844 (900-1¼)	1560-2½ 844 (900-2½)	844 (900-2½)
CIRCLING	1560-1¼ 839 (900-1¼)	839 (900-1¼)	1560-2½ 839 (900-2½)	1660-3 939 (1000-3)

ELEV 721

TDZE 716

HIRL Rwy 14-32 0

MIRL Rwy 5-23 0

REIL Rws 5, 14, and 23 0