

WAAS CH 81915 W23A	APP CRS 231°	Rwy Idg TDZE 721 Apt Elev 721
--	------------------------	---

RNAV (GPS) RWY 23

PELLSTON RGNL/EMMET COUNTY (PLN)

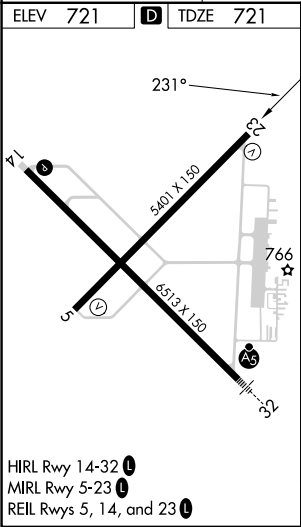
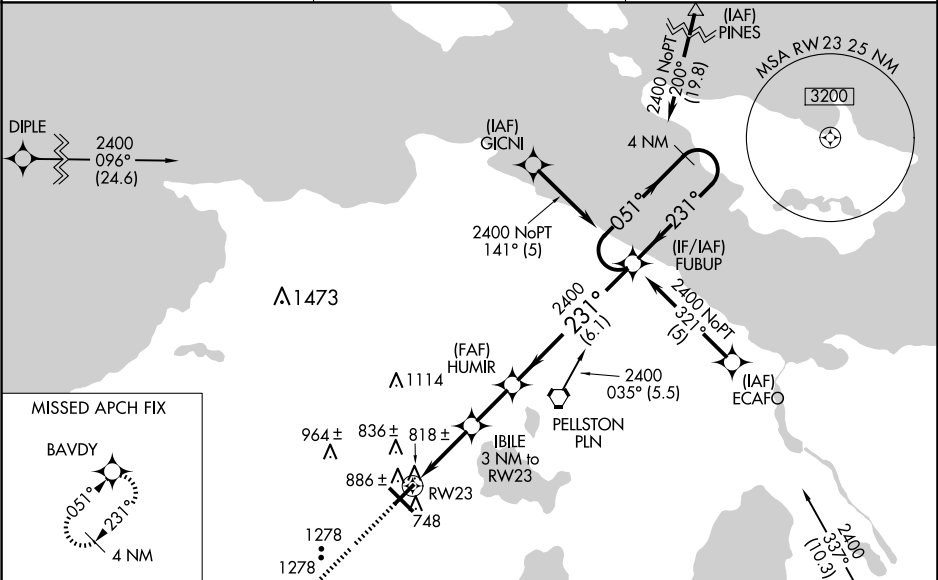
▼




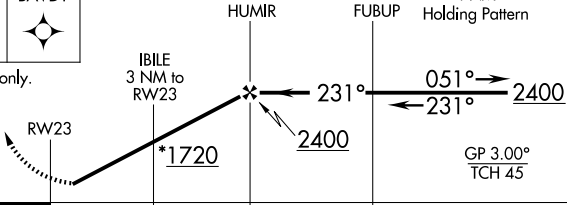
⚠

Baro-VNAV NA when using Harbor Springs altimeter setting. For uncompensated Baro-VNAV systems, LNAV/VNAV NA below -16°C (4°F) or above 47°C (116°F). DME/DME RNP-0.3 NA. Rwy 23 helicopter visibility reduction below ¾ SM NA. When local altimeter setting not received, use Harbor Springs altimeter setting; increase LPV DA to 1087 feet, LNAV/VNAV DA to 1139 feet and all visibilities ¼ SM; increase all MDA 40 feet. Circling Rwy 5, 14, 23 NA at night.

MISSED APPROACH:
Climb to 3000 direct
BAVDY and hold.

ASOS 119.025	MINNEAPOLIS CENTER 134.6 354.05	UNICOM 123.0 (CTAF) 0
------------------------	---	---------------------------------



					
*LNAV only.					
CATEGORY	A		B	C	D
LPV DA	1057-1¼		336 (400-1¼)		
LNAV/VNAV DA	1109-1¼		388 (400-1¼)		
LNAV MDA	1240-1	519 (600-1)		1240-1½ 519 (600-1½)	1240-1¾ 519 (600-1¾)
CIRCLING	1280-1 559 (600-1)	1320-1 599 (600-1)	1560-2 ½ 839 (900-2½)		1660-3 939 (1000-3)