

LOC/DME I-PLN <b>111.3</b> Chan <b>50</b>	APP CRS <b>321°</b>	Rwy Idg <b>6513</b> TDZE <b>712</b> Apt Elev <b>721</b>
---	------------------------	---

ILS or LOC RWY 32  
PELLSTON RGNL/EMMET COUNTY (PLN)

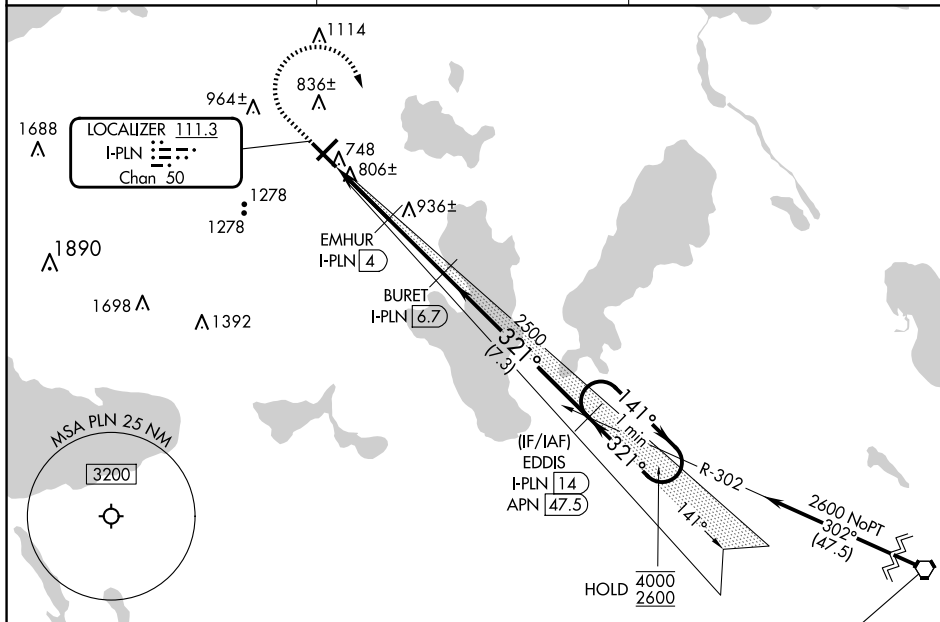
DME required.

**⚠** Circling Rwy 5, 14 NA at night. Autopilot coupled approach NA below 1868 feet. When local altimeter setting not received, use MGN altimeter setting and increase S-ILS 32 DA to 942 feet. Increase all MDAs 40 feet. For inop ALS, increase S-LOC 32 Cat C/D visibility to 1 SM. VDP NA when using MGN altimeter setting.

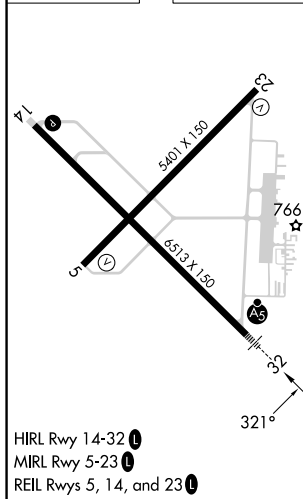
MALSR

**MISSED APPROACH:** Climb to 1400 then climbing right turn to 2600 on heading 160° and APN VORTAC R-302 to EDDIS/I-PLN 14 DME and hold.

ASOS <b>119.025</b>	MINNEAPOLIS CENTER <b>134.6 354.05</b>	UNICOM <b>123.0 (CTAF) 0</b>
------------------------	---	---------------------------------



ELEV 721	<b>D</b>	TDZE 712
----------	----------	----------



1400 ↑	2600 hdg 160°	APN R-302	EDDIS I-PLN 14	BURET I-PLN 6.7	EDDIS I-PLN 14 APN 47.5	One Minute Holding Pattern
CATEGORY	A		B		C	D
S-ILS 32			912-½		200 (200-½)	
S-LOC 32	1060-½		348 (400-½)		1060-⅝	348 (400-⅝)
CIRCLING	1280-1 559 (600-1)		1320-1 599 (600-1)		1560-2½ 839 (900-2½)	1660-3 939 (1000-3)