

WAAS CH 77906 W03A	APP CRS 030°	Rwy Idg 6780 TDZE 830 Apt Elev 859
--	------------------------	---

RNAV (GPS) RWY 3
MID-OHIO VALLEY RGNL (PKB)

RNP APCH.

⚠ Circling Rwy 10, 28 NA at night. Rwy 3 helicopter visibility reduction below RVR 4000 NA.

⚠ For uncompensated Baro-VNAV systems, LNAV/VNAV NA below -17°C or above 38°C.

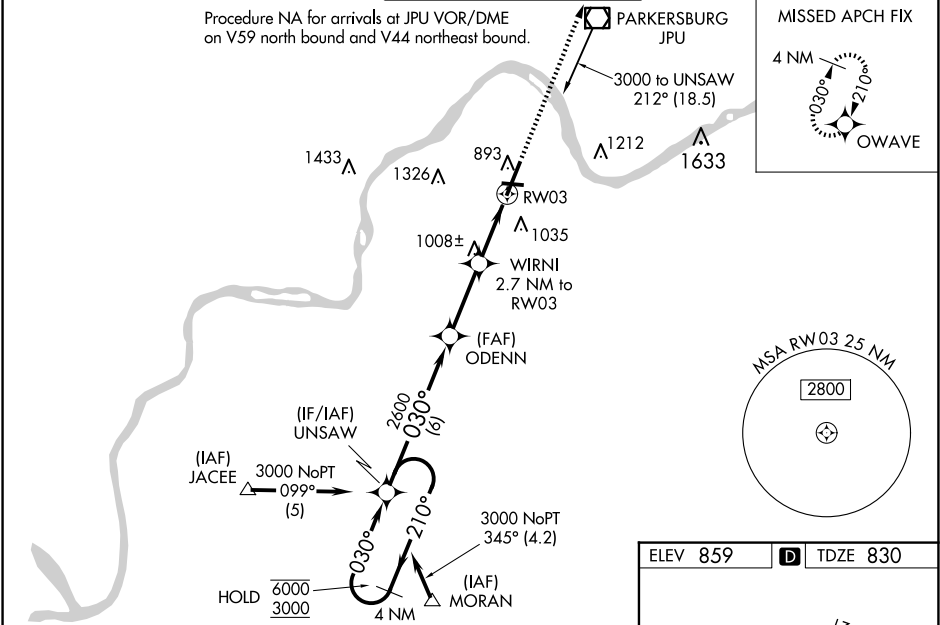
⚠ When local altimeter setting not received, use Athens/Albany altimeter setting: increase LPV DA to 1302 feet and visibility all Cats ¼ SM; increase LNAV/VNAV DA to 1436 feet and visibility all Cats ¼ SM; increase all MDAs 100 feet and visibility Cats C and D ½ SM. For inop ALS, increase LNAV/VNAV all Cats visibility to 1½ SM and LNAV Cats A/B visibility to RVR 5500. For inop ALS, when using Athens/Albany altimeter setting, increase LPV all Cats visibility to 1½ SM and LNAV/VNAV all Cats visibility to 1¾ SM.

MALSR

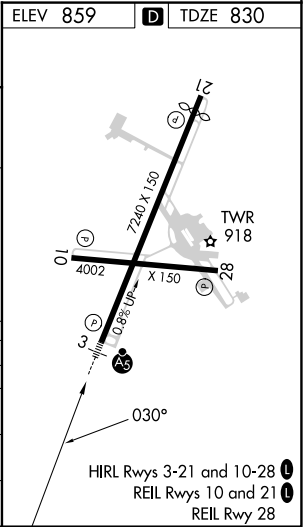
AS

MISSED APPROACH:
Climb to 3000 direct
OWAVE and hold.

ATIS 124.35	INDIANAPOLIS CENTER 125.55 317.475	PARKERSBURG TOWER ★ 123.7 (CTAF) 257.8	GND CON 126.45	UNICOM 122.95
-----------------------	--	--	--------------------------	-------------------------



4 NM Holding Pattern		UNSAW	ODENN	WIRNI 2.7 NM to RW03	<div><div>3000</div><div>↑</div></div>	<div><div>OWAVE</div><div>✦</div></div>
6000 ← 210°		030° →	030°	2600	*1.3 NM to RW03	RW03
3000						
GP 3.00° TCH 48		2600	*1700	6 NM	2.8 NM	1.4 NM
CATEGORY	A	B	C	D		
LPV DA	1202/40 372 (400-¾)					
LNAV/VNAV DA	1336/60 505 (500-1¼)					
LNAV MDA	1260/40 430 (500-¾)					
CIRCLING	1320-1 461 (500-1)	1380-1 521 (600-1)	1640-2¼ 781 (800-2¼)	1640-2½ 781 (800-2½)		



NE-4, 10 JUL 2025 to 07 AUG 2025

NE-4, 10 JUL 2025 to 07 AUG 2025