

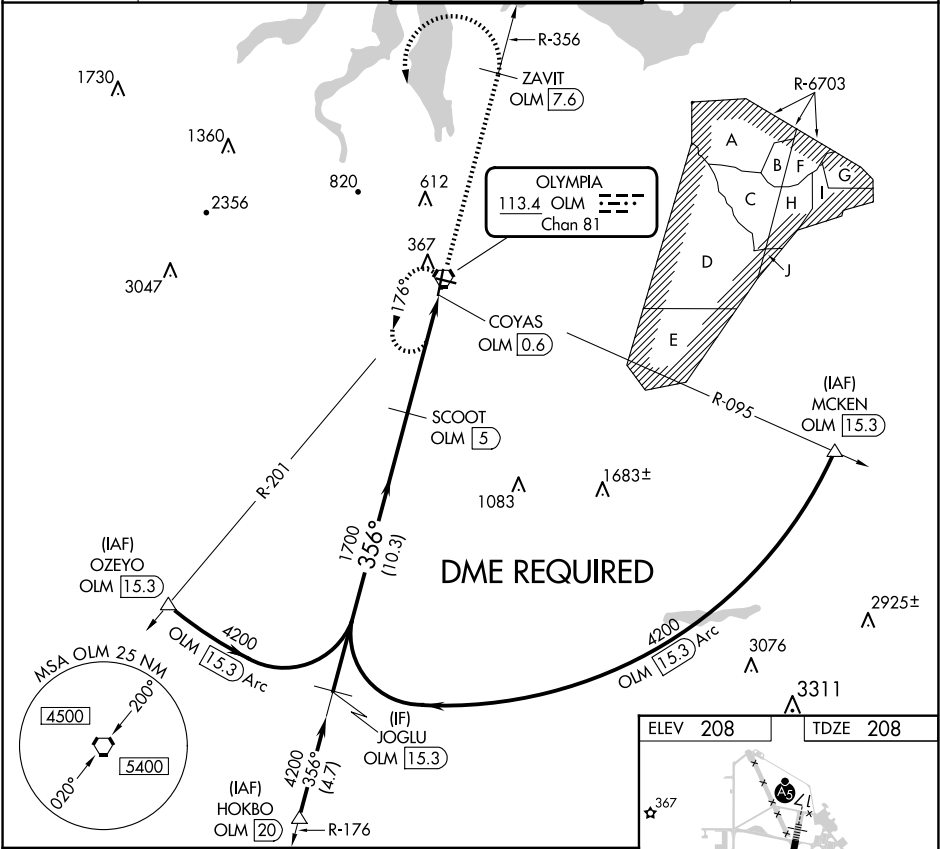
VORTAC OLM	Rwy Idg	5500
113.4	TDZE	208
Chan 81	Apt Elev	208

APP CRS	356°
---------	------

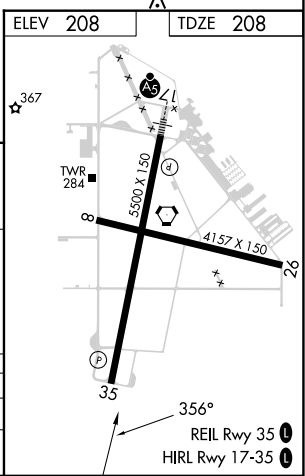
VOR RWY 35
OLYMPIA RGNL (OLM)

<div><div></div><div></div></div> <div>Rwy 35 helicopter visibility reduction below ¾ SM NA. DME required.</div>	MISSED APPROACH: Climb to 4000 on OLM VORTAC R-356 to ZAVIT/OLM 7.6 DME then climbing left turn direct OLM VORTAC and hold.
--	---

ATIS 135.725	SEATTLE APP CON 121.1 290.9	OLYMPIA TOWER* 124.4 (CTAF) 254.25	GND CON 121.6	UNICOM 122.95
-----------------	--------------------------------	---------------------------------------	------------------	------------------



	JOGLU OLM 15.3	SCOOT OLM 5	4000 OLM R-356	ZAVIT OLM 7.6	OLM
	4200	1700	OLM 2.5	OLM VORTAC	
	356°	3.13° TCH 50	COYAS OLM 0.6		
	10.3 NM	2.5 NM	1.8 NM		
CATEGORY	A	B	C	D	
S-35	840-1	632 (700-1)	840-1¾	632 (700-1¾)	
CIRCLING	840-1 632 (700-1)	860-1 652 (700-1)	1020-2½ 812 (900-2½)	1020-2¾ 812 (900-2¾)	



NW-1, 10 JUL 2025 to 07 AUG 2025

NW-1, 10 JUL 2025 to 07 AUG 2025