

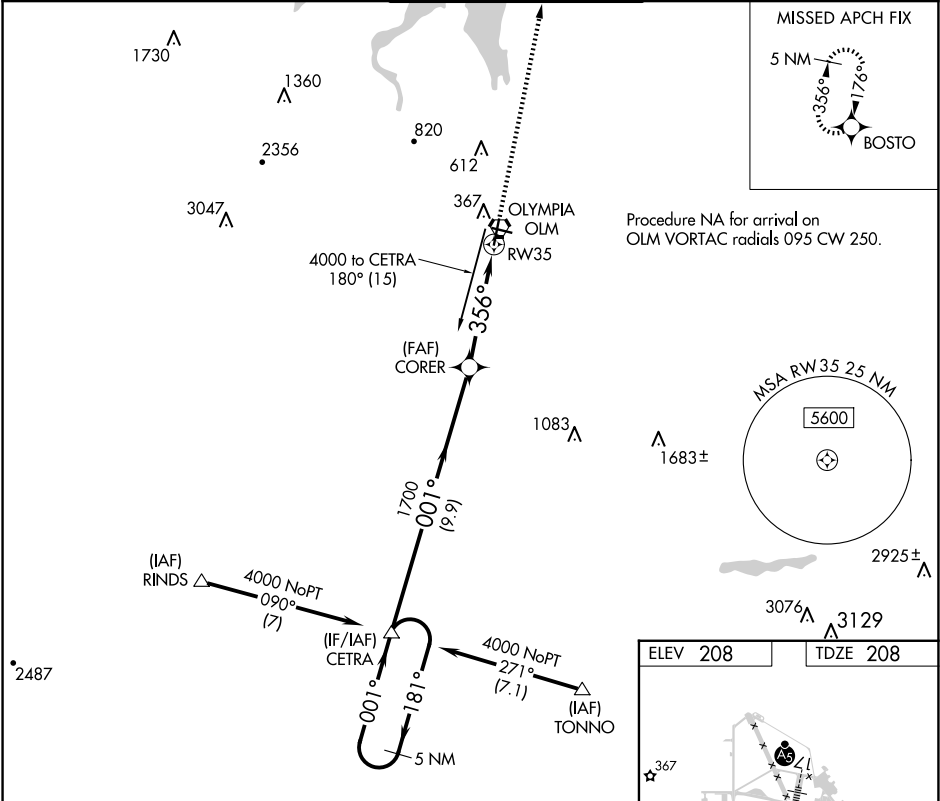
APP CRS	Rwy Idg	5500
356°	TDZE	208
	Apt Elev	208

RNAV (GPS) RWY 35
OLYMPIA RGNL (OLM)

⚠ Rwy 35 helicopter visibility reduction below ¾ SM NA.
DME/DME RNP-0.3 NA.

MISSED APPROACH: Climb to 4000 direct BOSTO and hold, continue climb-in-hold to 4000.

ATIS 135.725	SEATTLE APP CON 121.1 290.9	OLYMPIA TOWER* 124.4 (CTAF) 254.25	GND CON 121.6	UNICOM 122.95
-----------------	--------------------------------	---------------------------------------	------------------	------------------



5 NM Holding Pattern

4000 ← 181°
001° →

CETRA

CORER

4000 BOSTO

1.8 NM to RW35

3.04° TCH 50

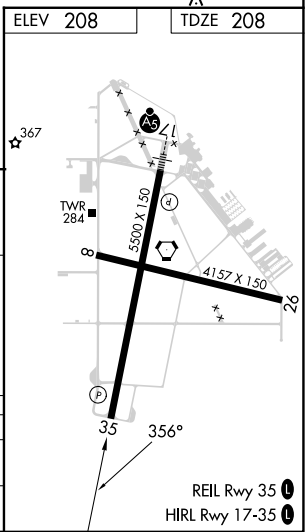
1700

356°

RW35

9.9 NM 2.7 NM 1.8 NM

CATEGORY	A	B	C	D
LNVA MDA	840-1 632 (700-1)	840-1¾ 632 (700-1¾)	840-1¾ 632 (700-1¾)	840-1¾ 632 (700-1¾)
CIRCLING	840-1 632 (700-1)	860-1 652 (700-1)	1020-2½ 812 (900-2½)	1020-2¾ 812 (900-2¾)



NW-1, 10 JUL 2025 to 07 AUG 2025

NW-1, 10 JUL 2025 to 07 AUG 2025