

LOC I-OLM	APP CRS	Rwy Idg	5500
111.9	176°	TDZE	207
		Apt Elev	208

ILS or LOC RWY 17

OLYMPIA RGNL (OLM)

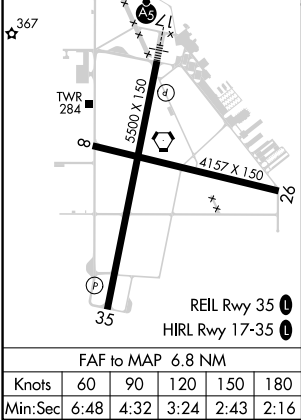
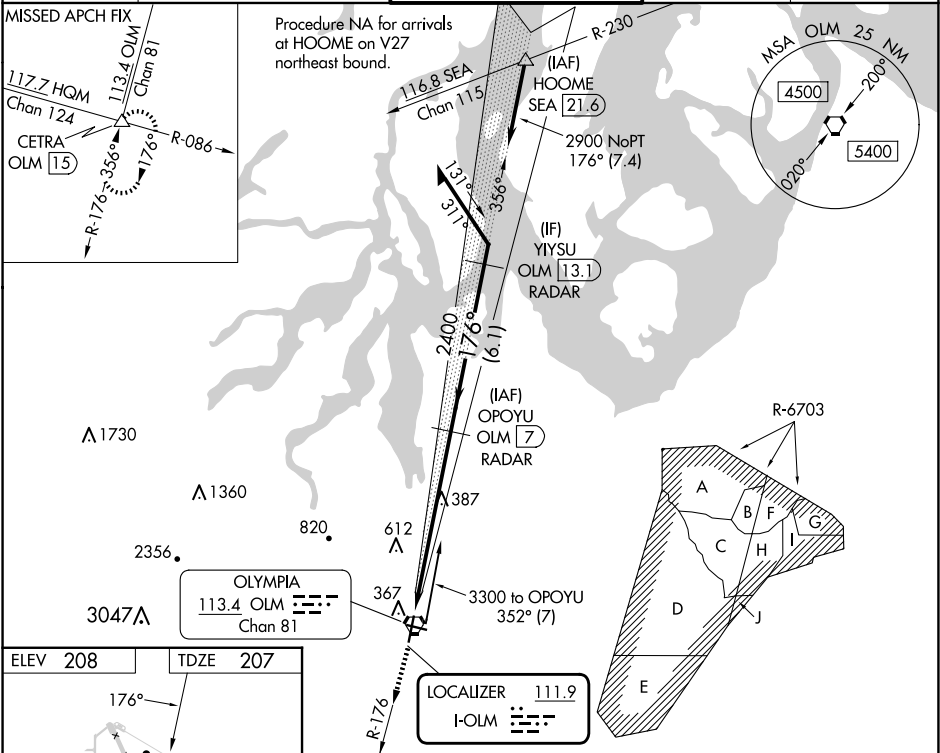
**⚠** DME or RADAR required. For inop ALS, increase S-LOC 17 Cat C/D visibility to 1½ SM.

**MALSR**

**A5**

**MISSED APPROACH:** Climb to 1400 then climb to 5500 on OLM VORTAC R-176 to CETRA INT/OLM 15 DME and hold, continue climb-in-hold to 5500.

ATIS	SEATTLE APP CON	OLYMPIA TOWER*	GND CON	UNICOM
135.725	121.1 290.9	124.4(CTAF) 254.25	121.6	122.95



1400	5500	CETRA	OPOYU OLM (7) RADAR	Remain within 10 NM
OLM R-176	OLM R-176	△	3300	2900
OLM (0.3)	2400	2400	2400	2400
6.8 NM	6.8 NM	6.8 NM	6.8 NM	6.8 NM
CATEGORY	A	B	C	D
S-ILS 17	407-½	200 (200-½)		
S-LOC 17	680-½	473 (500-½)	680-1	473 (500-1)
CIRCLING	720-1 512 (600-1)	860-1 652 (700-1)	1020-2½ 812 (900-2½)	1020-2¾ 812 (900-2¾)