

LOC/DME I-EWB	APP CRS	Rwy Idg	5000
109.7	234°	TDZE	78
Chan 34		Apt Elev	79

LOC BC RWY 23

NEW BEDFORD RGNL (EWB)

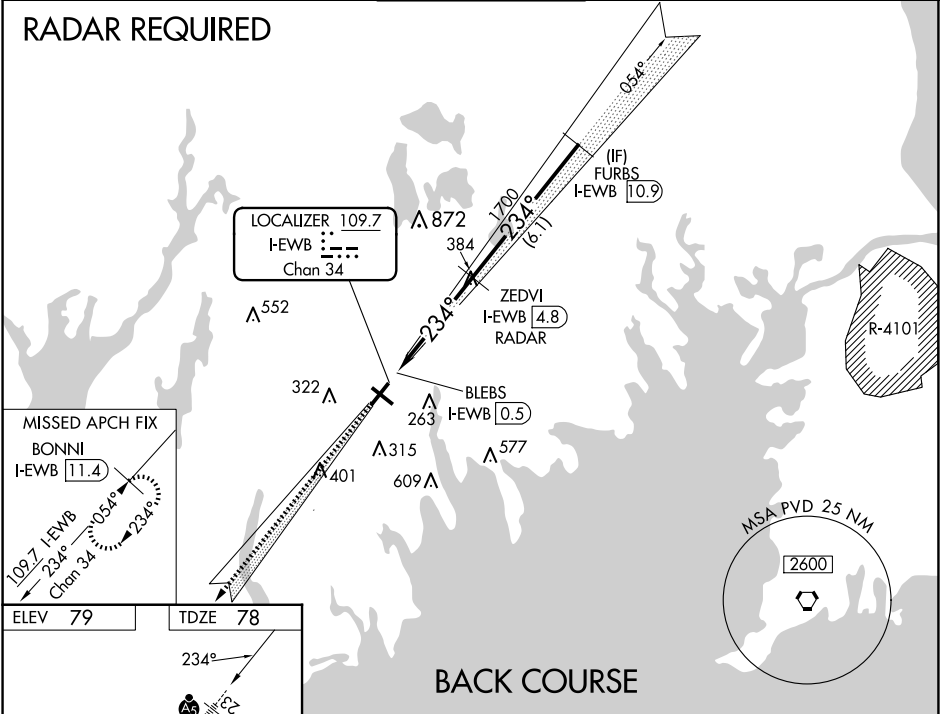
⚠ When local altimeter setting not received, use Taunton altimeter setting and increase all MDA 40 feet and increase S-23 Cats C and D visibility ½ SM. VDP NA with Taunton altimeter setting. Helicopter visibility reduction below ¾ SM NA. For inop MALSR increase S-23 Cat A/B visibility ¼ mile and Cat C/D visibility ⅓ mile. For inop MALSR, when using Taunton altimeter setting, increase S-23 Cat A/B visibility ¼ mile.

MALSR

MISSED APPROACH:
Climb to 2100 on I-EWB SW course to BONNI/I-EWB 11.4 DME and hold.

ATIS 126.85	PROVIDENCE APP CON* 128.7 269.525	NEW BEDFORD TOWER* 118.1 (CTAF) 0 239.0	GND CON 121.9	UNICOM 122.95
-----------------------	---	---	-------------------------	-------------------------

RADAR REQUIRED



ELEV 79 TDZE 78

MIRL Rwy 14-32
HIRL Rwy 5-23
REIL Rwy 32

FAF to MAP 4.3 NM

Knots	60	90	120	150	180
Min:Sec	4:18	2:52	2:09	1:43	1:26

2100 I-EWB SW crs BONNI I-EWB 11.4

Disregard GS indications.

CATEGORY	A	B	C	D
S-23	580-¾ 502 (600-¾)		580-1 502 (600-1)	
CIRCLING	620-1 541 (600-1)	640-1 561 (600-1)	720-1¾ 641 (700-1¾)	960-3 881 (900-3)

NE-1, 10 JUL 2025 to 07 AUG 2025

NE-1, 10 JUL 2025 to 07 AUG 2025