

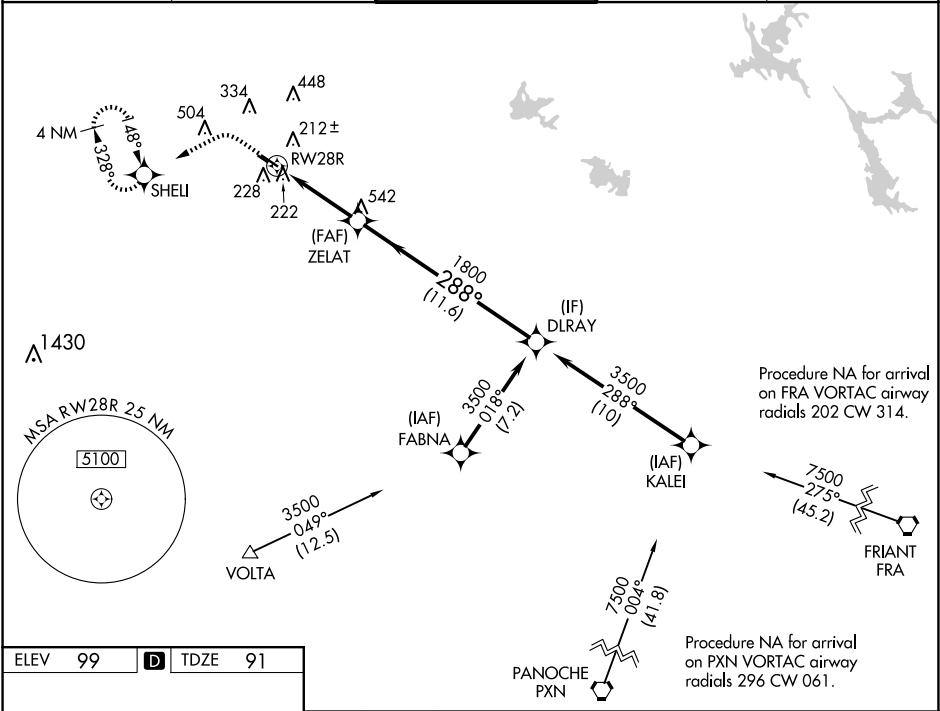
WAAS CH <b>70609</b> <b>W28A</b>	APP CRS <b>288°</b>	Rwy ldg TDZE <b>91</b> Apt Elev <b>99</b>
--	------------------------	---

RNAV (GPS) RWY 28R

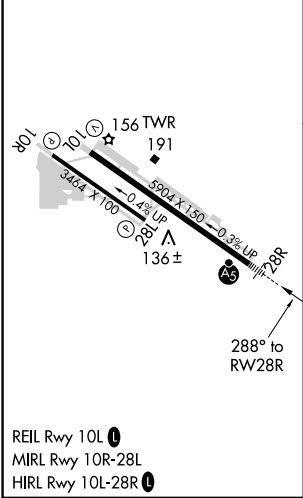
MODESTO CITY-COUNTY-HARRY SHAM FLD (MOD)

RNP APCH. ⚠ For uncompensated Baro-VNAV systems, LNAV/VNAV NA below -1°C or above 54°C. For inoperative ALS, increase LNAV/VNAV all Cats visibility to 7/8 SM.	MALSR ⚠	MISSED APPROACH: Climb to 500 then climbing left turn to 3000 direct SHELI and hold, continue climb-in-hold to 3000.
---	------------	--

ATIS <b>127.7</b>	NORCAL APP CON <b>120.95 269.45</b>	MODESTO TOWER ★ <b>125.3 (CTAF) 0 257.8</b>	GND CON <b>121.7</b>	UNICOM <b>122.95</b>
----------------------	--	--	-------------------------	-------------------------



ELEV 99	D	TDZE 91
---------	---	---------



	500	3000	SHELI	
	↑	↶	✧	
	*LNAV only	*2 NM to RWY 28R	ZELAT	DLRAY
			1800	3500
			288°	
			1800	
			2 NM	3.2 NM
			11.6 NM	
			GP 3.00°	TCH 53
CATEGORY	A	B	C	D
LPV DA	291-½	200 (200-½)		
LNAV/VNAV DA	393-½	302 (300-½)		
LNAV MDA	480-½	389 (400-½)	480-⅝	389 (400-⅝)
CIRCLING	540-1 441 (500-1)	600-1 501 (600-1)	700-1¾ 601 (700-1¾)	820-2¼ 721 (800-2¼)