

WAAS CH 56340 W17A	APP CRS 173°	Rwy ldg TDZE Apt Elev	5500 1302 1302
--	------------------------	-----------------------------	---

RNAV (GPS) RWY 17

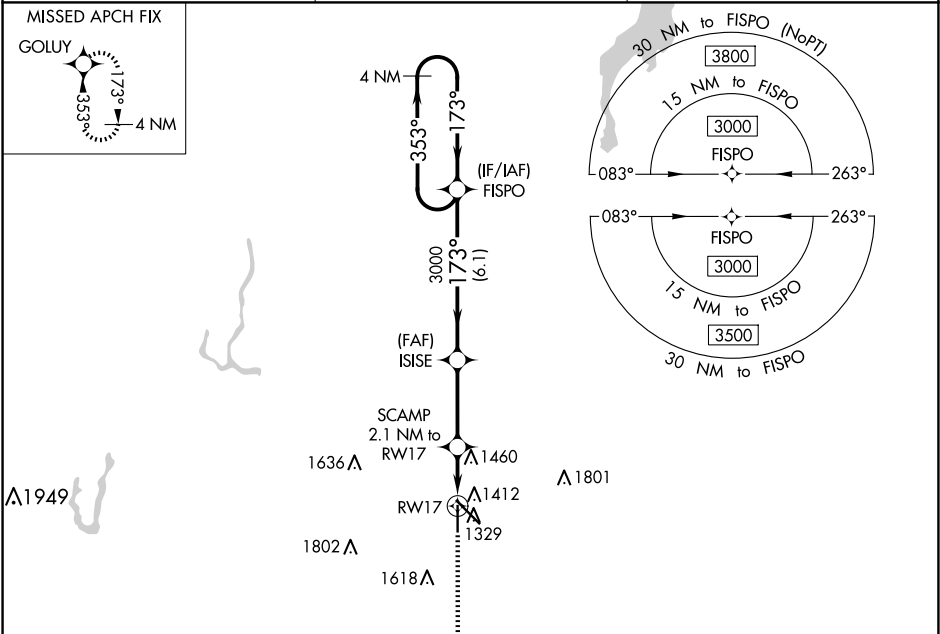
ABERDEEN RGNL (ABR)

⚠

For uncompensated Baro-VNAV systems, LNAV/VNAV NA below -22°C (-7°F) or above 54°C (130°F).
DME/DME RNP-0.3 NA.

MISSED APPROACH: Climb to 3000 direct GOLUY and hold.

ASOS 125.875	MINNEAPOLIS CENTER 120.6 371.9	UNICOM 122.7 (CTAF) 1
------------------------	--	--



ELEV 1302 **D** TDZE 1302

4 NM Holding Pattern
3000 ← 353° → 173° → 3000
GP 3.00° TCH 40
FISPO ISISE 3000
SCAMP 2.1 NM to RW17
*1.2 NM to RW17
RW17
*2000
*LNAV only

CATEGORY	A	B	C	D
LPV DA	1502-3⁄4 200 (200-3⁄4)			
LNAV/VNAV DA	1624-1 1⁄8 322 (400-1 1⁄8)			
LNAV MDA	1720-1 418 (500-1)	1720-1 1⁄8 418 (500-1 1⁄8)		
C CIRCLING	1760-1 458 (500-1)	1860-1 558 (600-1)	1960-1 3⁄4 658 (700-1 3⁄4)	2160-2 3⁄4 858 (900-2 3⁄4)

ABERDEEN, SOUTH DAKOTA

Orig 02MAR17

45°27'N-98°25'W

HIRL Rwy 13-31 **1**

MIRL Rwy 17-35 **1**

REIL Rws 13, 17 and 35 **1**

ABERDEEN RGNL (ABR)

RNAV (GPS) RWY 17