




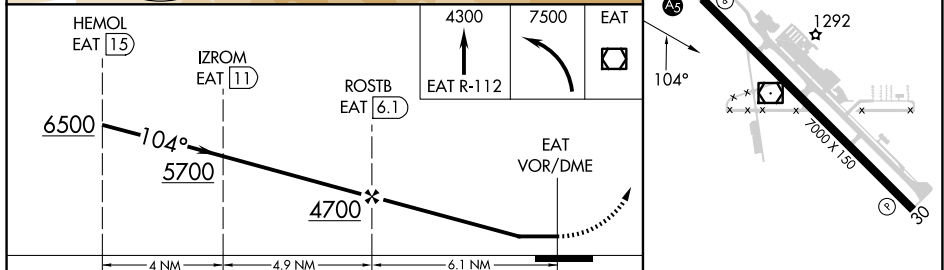
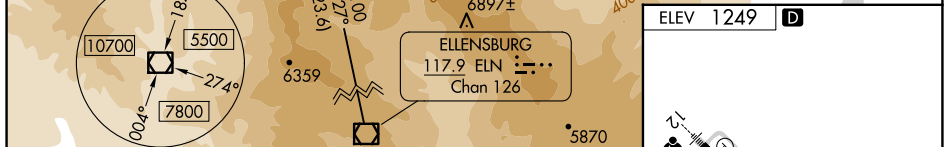
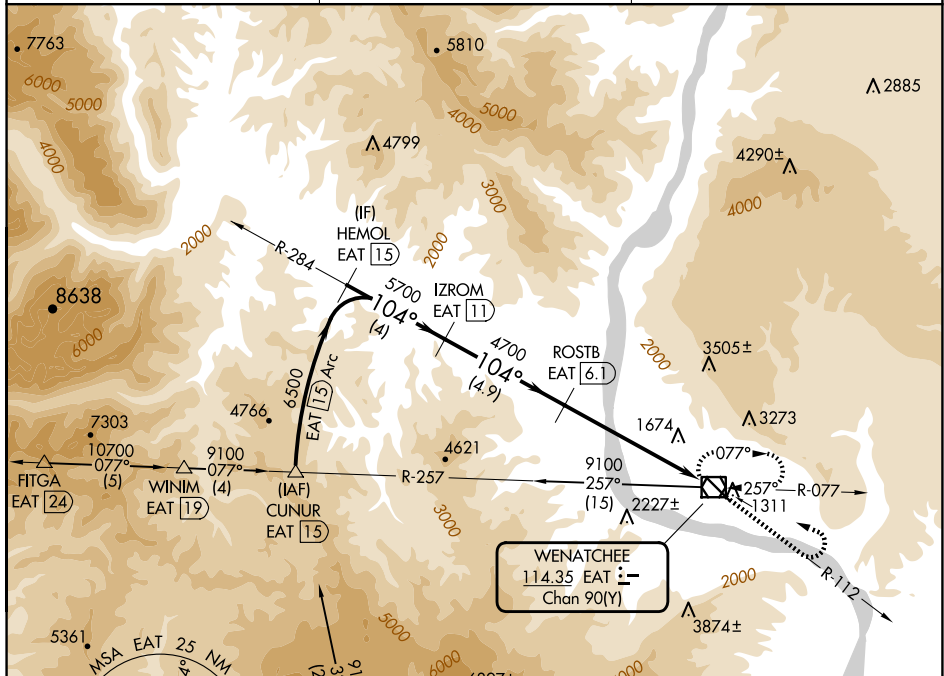
VOR/DME EAT <b>114.35</b> Chan <b>90(Y)</b>	APP CRS <b>104°</b>	Rwy Ldg <b>N/A</b> TDZE <b>N/A</b> Apt Elev <b>1249</b>
---	------------------------	---

VOR-B

PANGBORN MEML(EAT)

   -7°C	DME required. Circling NA northeast of Rwy 12-30.	MISSED APPROACH: Climb to 4300 on EAT VOR/DME R-112 then climbing left turn to 7500 direct EAT VOR/DME and hold, continue climb-in-hold to 7500.
--	--	--

ASOS <b>119.925</b>	SEATTLE CENTER <b>126.1</b>	UNICOM <b>123.0 (CTAF) 0</b>
------------------------	--------------------------------	---------------------------------



CATEGORY	A	B	C	D	
<b>C</b> CIRCLING	2660-1¼ 1411 (1500-1¼)	2660-1½ 1411 (1500-1½)	3200-3 1951 (2000-3)	3900-3 2651 (2700-3)	REIL Rwy 30 ① HIRL Rwy 12-30 ①

WENATCHEE, WASHINGTON

Orig-B 07DEC17

PANGBORN MEML (EAT)

VOR-B

47°24'N-120°12'W

NW-1, 10 JUL 2025 to 07 AUG 2025

NW-1, 10 JUL 2025 to 07 AUG 2025