

APP CRS  
300°

Rwy Ldg	<b>7000</b>
TDZE	<b>1232</b>
Apt Elev	<b>1249</b>

RNAV (RNP) Z RWY 30  
PANGBORN MEML (EAT)

PANGBORN MEML(EAT)

  -7°C

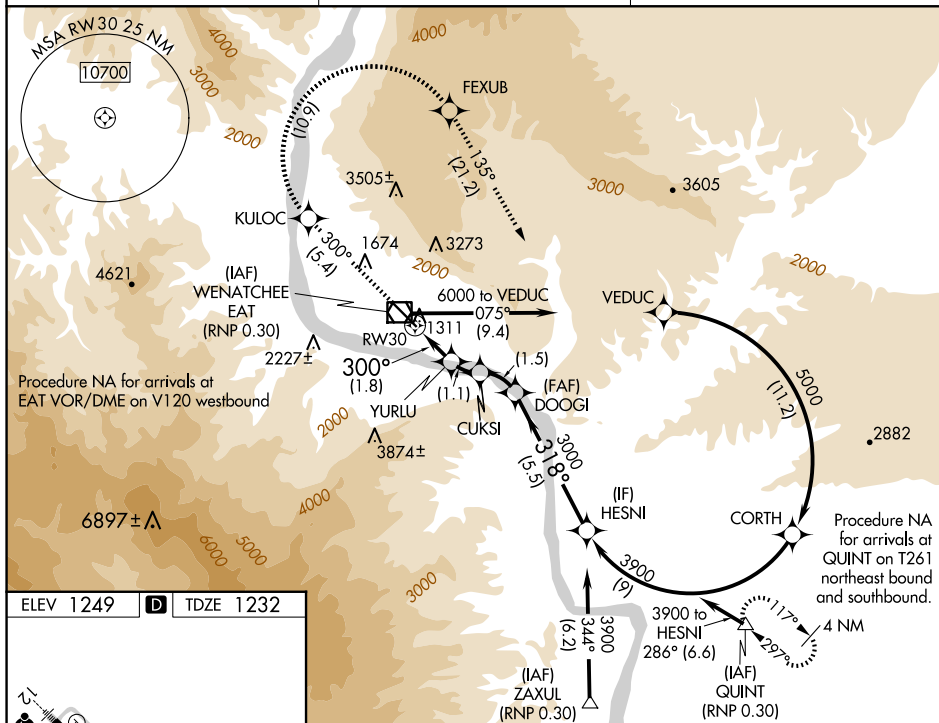
For uncompensated Baro-VNAV systems,  
procedure NA below -10°C (14°F) or  
above 44°C (111°F). RF required.  
GPS required. FD or HUD required.

**MISSED APPROACH:** Climb to 6000 on track 300° to KULOC, right turn to FEXUB, and on track 135° to QUINT and hold.

# Missed approach requires minimum climb of 325 feet per NM to 5500.

ASOS  
**119.925**

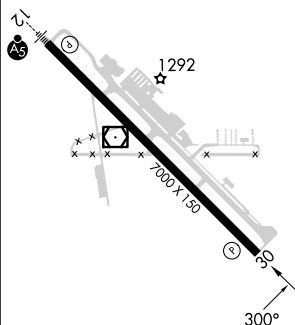
SEATTLE CENTER  
126.1

UNICOM  
123.0 (CTAF) **L**

ELEV 1249	<b>D</b>	TDZE 1232
-----------	----------	-----------

---

D	TDZE 1232
---	-----------



REIL Rwy 30 L

HIRL Rwy 12-30 **L**

6000 ↑ tr 300°	KULOC ✱	FEXUB ✱	tr 135° △	QUINT		
VGS1 and RNAV glidepath not coincident (VGS1 Angle 4.30/TCH 46).					HESNI	
<p>RW30 300° 318° 3000 3900 GP 3.60° TCH 60</p> <p>1.8 NM 1.1 NM 1.5 NM 5.5 NM</p>						
CATEGORY	A		B		C	D
RNP 0.17 DA*	1595-1		363 (400-1)		NA	
RNP 0.30 DA#	1686-1 $\frac{3}{8}$		454 (500-1 $\frac{3}{8}$ )		NA	

**AUTHORIZATION REQUIRED**

RNAV (RNP) Z RWY 30