

APP CRS	Rwy Ldg	7000
120°	TDZE	1225
	Apt Elev	1249

RNAV (RNP) RWY 12

PANGBORN MEML (EAT)

▼

▲

❄

-7°C

For uncompensated Baro-VNAV systems, procedure NA below -10°C (14°F) or above 54°C (130°F). RF required. GPS required. FD or HUD required.

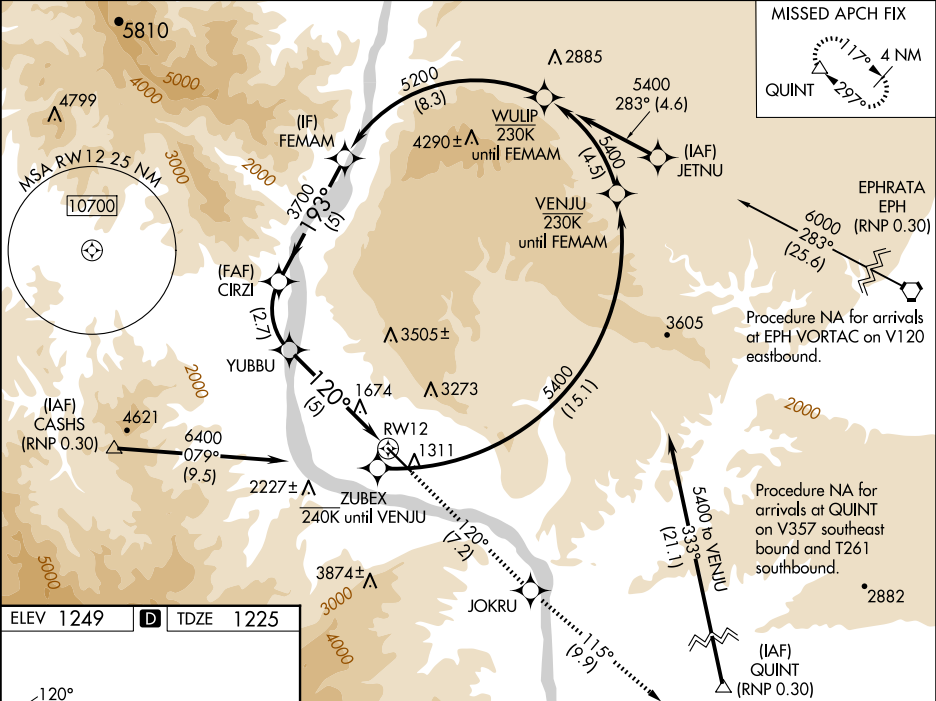
MALSR

MISSED APPROACH: Climb to 5400 on track 120° to JOKRU and on track 115° to QUINT and hold.

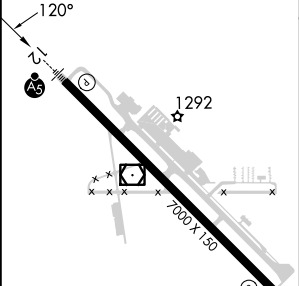
\*Missed approach requires a minimum climb of 319 feet per NM to 3700.

#Missed approach requires a minimum climb of 295 feet per NM to 3700.

ASOS 119.925	SEATTLE CENTER 126.1	UNICOM 123.0 (CTAF) 0
-----------------	-------------------------	--------------------------



ELEV 1249	D	TDZE 1225
-----------	---	-----------



VGSI and RNAV glidepath not coincident (VGSI Angle 3.60/TCH 60).				
FEMAM	CIRZI	YUBBU	JOKRU	QUINT
5200	3700	2854	5400	fr 115°
GP 3.00°	193°	120°	fr 120°	△
TCH 45	3700			
	5 NM	2.7 NM	5 NM	
CATEGORY	A	B	C	D
RNP 0.15 DA*		1995-3	770 (800-3)	
RNP 0.19 DA#		2072-3	847 (900-3)	
RNP 0.30 DA		2417-5	1192 (1200-5)	

AUTHORIZATION REQUIRED