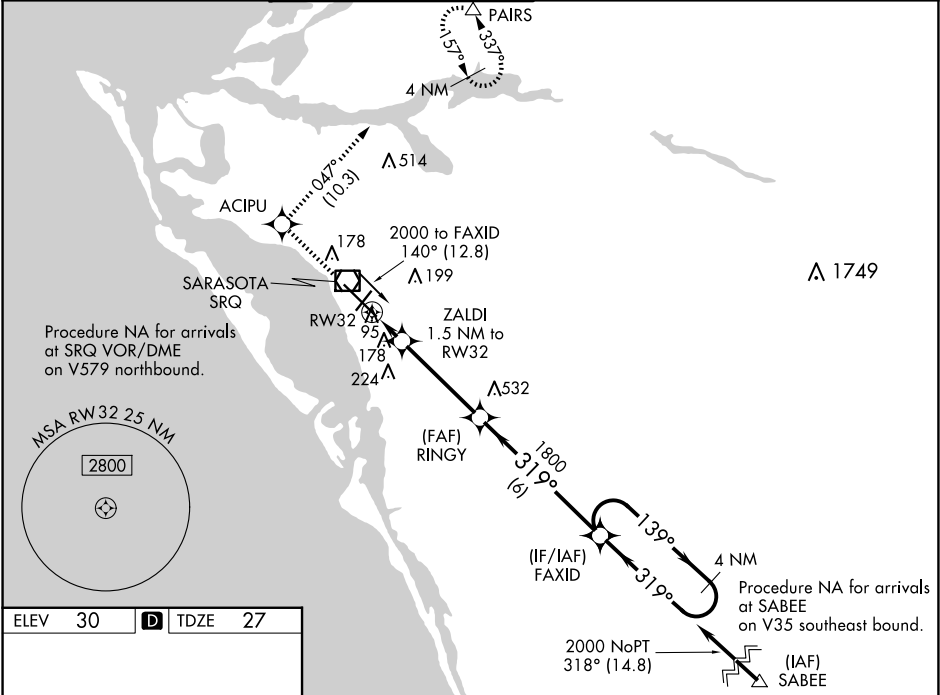


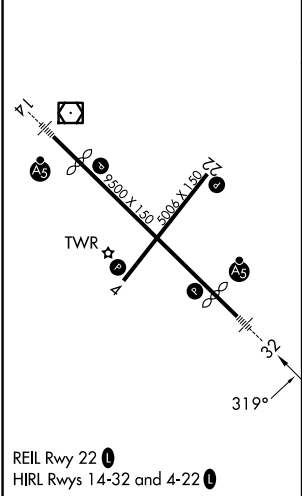
WAAS CH 72605 W32A	APP CRS 319°	Rwy Ldg TDZE Apt Elev	7510 27 30
--	------------------------	-----------------------------	---------------------------------------

RNAV (GPS) RWY 32
SARASOTA/BRADENTON INTL (SRQ)

RNP APCH. ▼ For uncompensated Baro-VNAV systems, LNAV/VNAV NA below -15°C or above 43°C. When control tower closed, LPV and LNAV/VNAV NA; increase LNAV all Cats visibility to 1 mile. When control tower closed, inop table does not apply to LNAV Cats A and B. When control tower closed, for inop MALSR, increase LNAV Cat C and D visibility to 1½ mile.			MALSR 	MISSED APPROACH: Climb to 3000 direct ACIPU and on track 047° to PAIRS and hold, continue climb-in-hold to 3000.	
ATIS 124.375	TAMPA APP CON 119.65 353.575	SARASOTA TOWER ★ 120.1(CTAF) 0 256.8	GND CON 121.9 273.6	CLNC DEL 118.25	UNICOM 122.95



ELEV 30	D	TDZE 27
---------	----------	---------



3000	ACIPU	tr 047°	PAIRS	FAXID	4 NM Holding Pattern
*LNAV only.					
ZALDI 1.5 NM to RW32					
RW32					
RINGY 1800					
540*					
1.5 NM 3.9 NM 6 NM					
CATEGORY	A	B	C	D	
LPV DA	227-½ 200 (200-½)				
LNAV/ VNAV DA	463-1 436 (500-1)				
LNAV MDA	440-½	413 (500-½)	440-¾	413 (500-¾)	
CIRCLING	500-1	470 (500-1)	600-1½ 570 (600-1½)	600-2 570 (600-2)	

SE-3, 10 JUL 2025 to 07 AUG 2025

SE-3, 10 JUL 2025 to 07 AUG 2025