

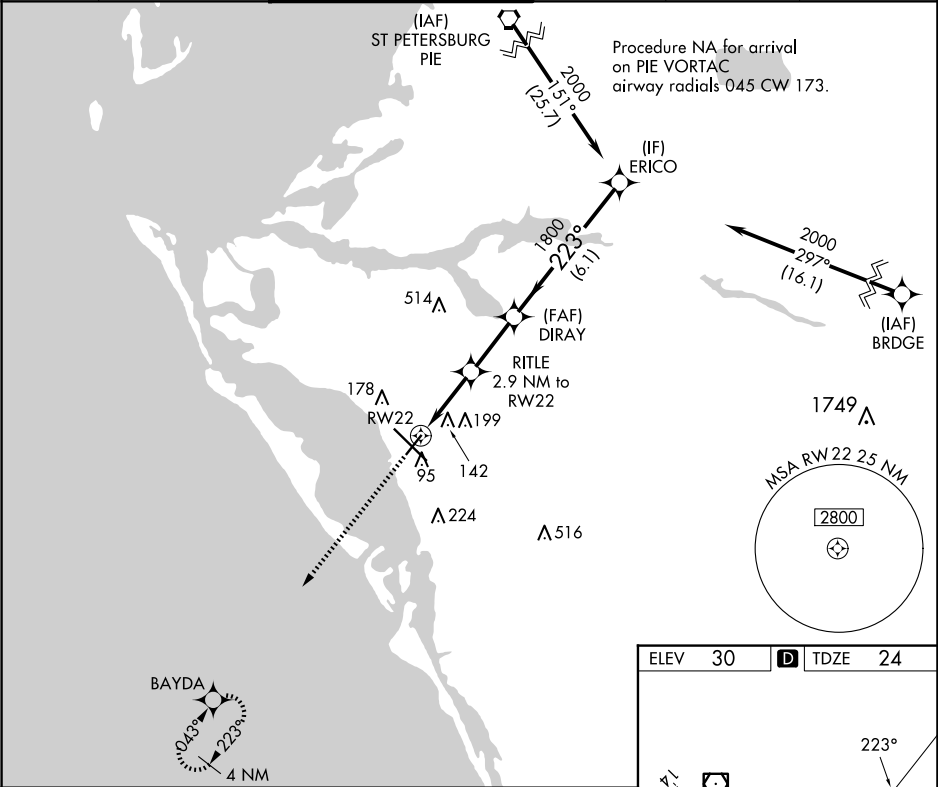
APP CRS	Rwy Ldg	5006
223°	TDZE	24
	Apt Elev	30

RNAV (GPS) RWY 22

SARASOTA/BRADENTON INTL (SRQ)

RNP APCH.	MISSED APPROACH: Climb to 2000 direct BAYDA and hold.
▼ Rwy 22 helicopter visibility reduction below 1 SM NA. For uncompensated Baro-VNAV systems, LNAV/VNAV NA below -15°C or above 43°C.	

ATIS	TAMPA APP CON	SARASOTA TOWER★	GND CON	CLNC DEL	UNICOM
124.375	119.65 353.575	120.1(CTAF) 256.8	121.9 273.6	118.25	122.95



2000	BAYDA	VGSI and RNAV glidepath not coincident (VGSI Angle 3.00/TCH 43).	ERICO
*LNAV only.			
RW22	RITLE 2.9 NM to RW22	DIRAY 1800	2000
	1000*	1800	GP 3.00° TCH 57
	2.9 NM	2.5 NM	6.1 NM
CATEGORY	A	B	C
LNAV/VNAV	DA	303-1	279 (300-1)
LNAV MDA		400-1	376 (400-1)
CIRCLING	500-1	470 (500-1)	600-1½ 570 (600-1½)
			600-2 570 (600-2)

