
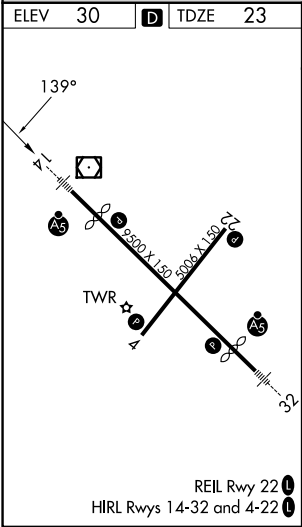
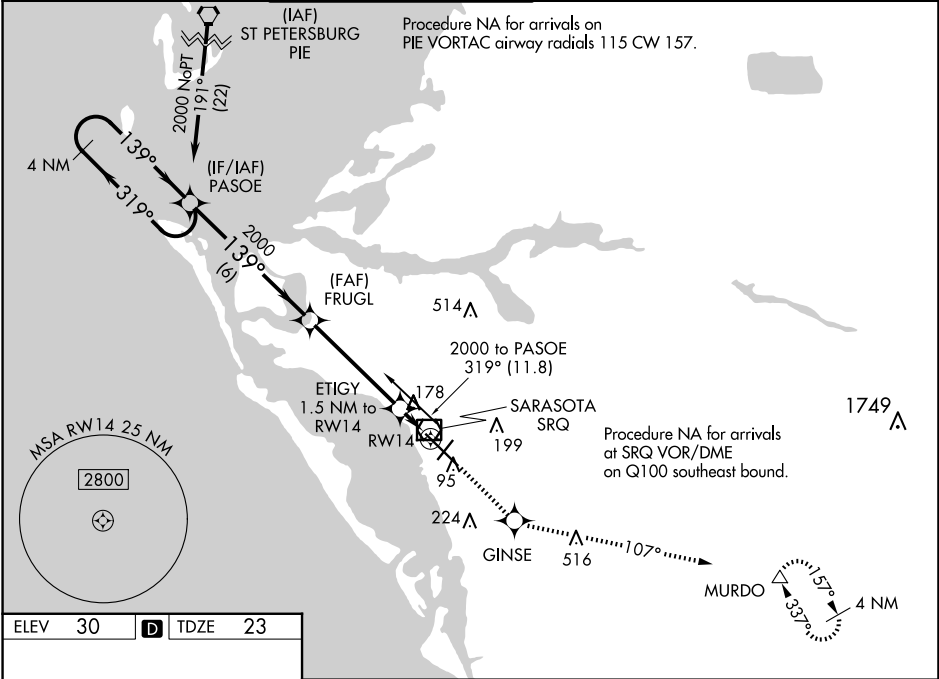


WAAS CH <b>86705</b> <b>W14A</b>	APP CRS <b>139°</b>	Rwy Ldg <b>7540</b> TDZE <b>23</b> Apt Elev <b>30</b>
----------------------------------------	------------------------	-------------------------------------------------------------

RNAV (GPS) RWY 14

SARASOTA/BRADENTON INTL (SRQ)

RNP APCH.				<div>MALSR</div> <div></div>	<div>MISSED APPROACH: Climb to 3000 direct GINSE and on track 107° to MURDO and hold.</div>	
<div>▼ For uncompensated Baro-VNAV systems, LNAV/VNAV NA below -15°C or above 43°C. When control tower closed, LPV and LNAV/VNAV NA; increase LNAV all Cats visibility to 1 mile. When control tower closed, inop table does not apply to LNAV Cats A and B. When control tower closed, for inop MALSR, increase LNAV Cats C and D visibility to 1½ mile.</div>						
ATIS 124.375	TAMPA APP CON 119.65 353.575	SARASOTA TOWER ★ 120.1(CTAF) 0 256.8	GND CON 121.9 273.6	CLNC DEL 118.25	UNICOM 122.95	



4 NM Holding Pattern		PASOE	FRUGL	3000	GINSE	tr 107°	MURDO
2000 ← 319°		139° →	2000	ETIGY 1.5 NM to RWY 14	*LNAV only.		
GP 3.00°		TCH 54	2000	*560	RWY 14		
		6 NM	4.5 NM	1.5 NM			
CATEGORY	A	B	C	D			
LPV DA	223-½		200 (200-½)				
LNAV/VNAV DA	489-1⅛		466 (500-1⅛)				
LNAV MDA	440-½	417 (500-½)	440-¾	417 (500-¾)			
CIRCLING	500-1	470 (500-1)	600-1½ 570 (600-1½)	600-2 570 (600-2)			

SE-3, 10 JUL 2025 to 07 AUG 2025

SE-3, 10 JUL 2025 to 07 AUG 2025