

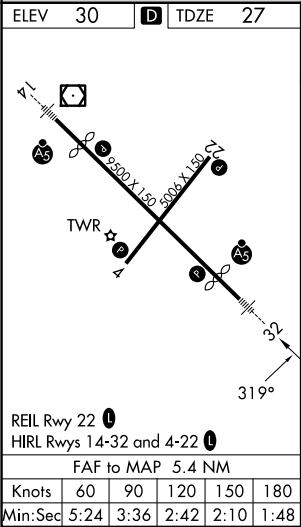
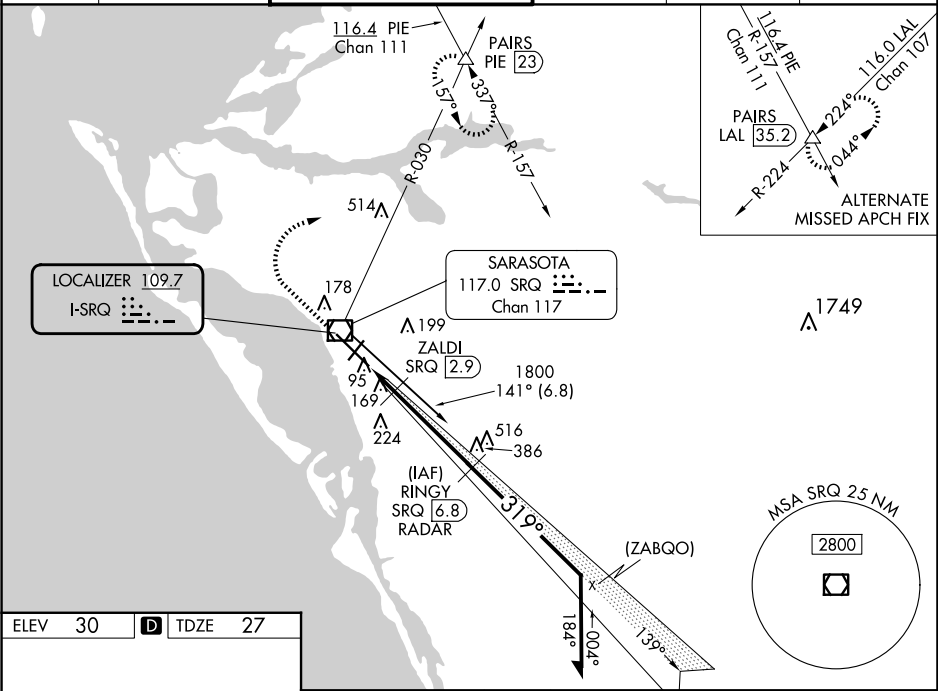






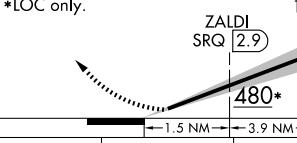
LOC I-SRQ	APP CRS	Rwy Ldg	7510
109.7	319°	TDZE	27
		Apt Elev	30

ILS or LOC RWY 32

SARASOTA/BRADENTON INTL (SRQ)

DME or RADAR required.			<div>MALSR</div> <div></div>	MISSED APPROACH: Climb to 1000 then climbing right turn to 3000 on heading 065° and SRQ VOR/DME R-030 to PAIRS INT/PIE VORTAC 23 DME and hold, continue climb-in-hold to 3000.		
<div></div> Autopilot coupled approach NA below 840. When control tower closed, S-ILS 32 Minimums NA, increase S-LOC 32 and ZALDI Fix Minimums S-LOC 32 all Cats visibility to 1. When control tower closed, inop table does not apply to S-LOC 32 and ZALDI Fix Minimums all Cats.						
ATIS 124.375	TAMPA APP CON 119.65 353.575	SARASOTA TOWER ★ 120.1(CTAF) 0 256.8	GND CON 121.9 273.6	CLNC DEL 118.25	UNICOM 122.95	



1000	3000	SRQ R-030	PAIRS	RINGY SRQ 6.8 RADAR	Remain within 10 NM
		hdg 065°			
*LOC only.					
					
CATEGORY	A	B	C	D	
S-ILS 32	227-1/2 200 (200-1/2)				
S-LOC 32	480-1/2	453 (500-1/2)	480-7/8	453 (500-7/8)	
CIRCLING	500-1	470 (500-1)	600-1 1/2 570 (600-1 1/2)	600-2 570 (600-2)	
ZALDI FIX MINIMUMS					
S-LOC 32	360-1/2 333 (400-1/2)				
CIRCLING	500-1	470 (500-1)	600-1 1/2 570 (600-1 1/2)	600-2 570 (600-2)	