

WAAS CH <b>53732</b> <b>W35A</b>	APP CRS <b>349°</b>	Rwy Idg TDZE Apt Elev	<b>4808</b> <b>39</b> <b>40</b>
--	------------------------	-----------------------------	---------------------------------------

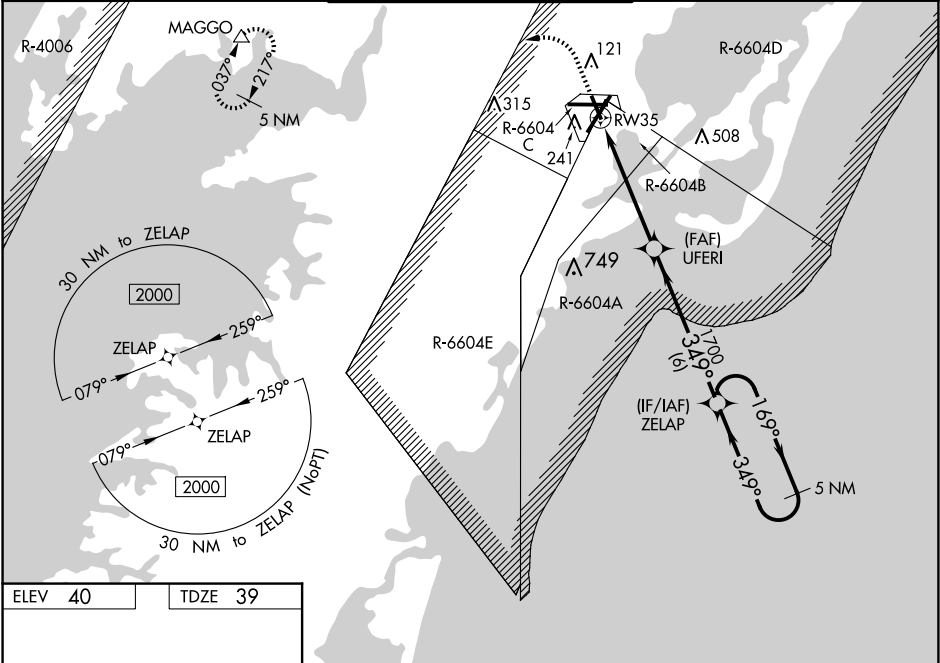
RNAV (GPS) RWY 35

Wallops Flight Facility (WAL)

**⚠** For uncompensated Baro-VNAV systems, LNAV/VNAV NA below -11°C (13°F) or above 54°C (130°F). DME/DME RNP-0.3 NA. When local altimeter setting not received, use Salisbury altimeter setting; increase LPV DA to 343; increase LNAV/VNAV DA to 464 and all Cats visibility ¼ mile; increase all MDA 60 feet and LNAV Cats C/D visibility ⅓ mile and Circling Cat C visibility ¼ mile. Baro-VNAV and VDP NA when using Salisbury altimeter setting. Helicopter visibility reduction below ¾ SM NA. Procedure NA when R-6604 active.

**MISSED APPROACH:** Climb to 600 then climbing left turn to 2000 direct MAGGO and hold.

ASOS <b>119.175</b>	PATUXENT APP CON ★ <b>127.95 314.0</b>	Wallops Tower ★ <b>126.5 (CTAF) 0 306.975 (CTAF) 0</b>	GND CON <b>127.875 269.325</b>	CLNC DEL <b>121.7</b>
------------------------	---	---	-----------------------------------	--------------------------



ELEV 40

TDZE 39

The inset chart shows the RW35 corridor and its branches. Key features include:

- RW35** (MAGGO) with a 5 NM radius and 217° heading.
- RW35A** (ZELAP) with a 5 NM radius and 169° heading.
- RW35B** (Uferi) with a 5 NM radius and 349° heading.
- RW35C** (RW35) with a 5 NM radius and 349° heading.
- RW35D** (RW35) with a 5 NM radius and 349° heading.
- RW35E** (RW35) with a 5 NM radius and 349° heading.
- RW35F** (RW35) with a 5 NM radius and 349° heading.
- RW35G** (RW35) with a 5 NM radius and 349° heading.
- RW35H** (RW35) with a 5 NM radius and 349° heading.
- RW35I** (RW35) with a 5 NM radius and 349° heading.
- RW35J** (RW35) with a 5 NM radius and 349° heading.
- RW35K** (RW35) with a 5 NM radius and 349° heading.
- RW35L** (RW35) with a 5 NM radius and 349° heading.
- RW35M** (RW35) with a 5 NM radius and 349° heading.
- RW35N** (RW35) with a 5 NM radius and 349° heading.
- RW35O** (RW35) with a 5 NM radius and 349° heading.
- RW35P** (RW35) with a 5 NM radius and 349° heading.
- RW35Q** (RW35) with a 5 NM radius and 349° heading.
- RW35R** (RW35) with a 5 NM radius and 349° heading.
- RW35S** (RW35) with a 5 NM radius and 349° heading.
- RW35T** (RW35) with a 5 NM radius and 349° heading.
- RW35U** (RW35) with a 5 NM radius and 349° heading.
- RW35V** (RW35) with a 5 NM radius and 349° heading.
- RW35W** (RW35) with a 5 NM radius and 349° heading.
- RW35X** (RW35) with a 5 NM radius and 349° heading.
- RW35Y** (RW35) with a 5 NM radius and 349° heading.
- RW35Z** (RW35) with a 5 NM radius and 349° heading.

600

2000

MAGGO

VGSI and RNAV glidepath not coincident (VGSI Angle 3.00/TCH 59).

5 NM Holding Pattern

\*LNAV only.

\*1.2 NM to RW35

Uferi 1700

RW35 1700

349°

169°

2000

GP 3.00° TCH 45

1.2

3.9 NM

6 NM

CATEGORY	A	B	C	D
LPV DA	289-1	250 (300-1)		
LNAV/VNAV DA	410-1¼	371 (400-1¼)		
LNAV MDA	460-1	421 (500-1)	460-1¼	421 (500-1¼)
CIRCLING	600-1	560 (600-1)	620-1½ 580 (600-1½)	860-2¾ 820 (900-2¾)