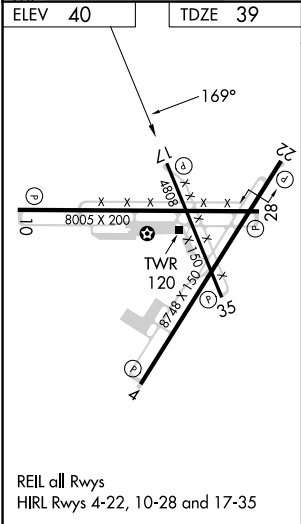
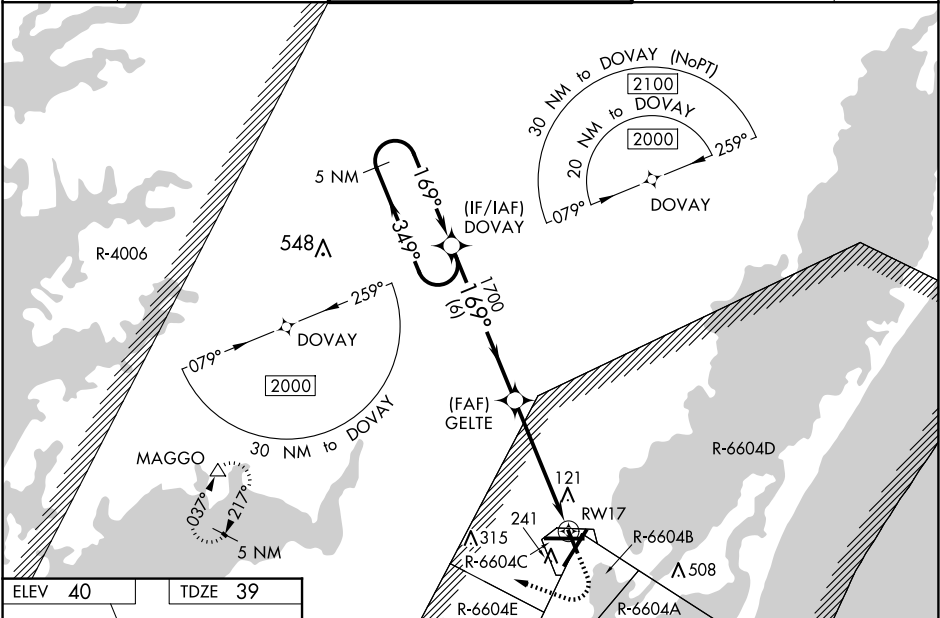


WAAS CH 69632 W17A	APP CRS 169°	Rwy Idg TDZE Apt Elev	4808 39 40
--	------------------------	-----------------------------	---------------------------------------

RNAV (GPS) RWY 17
Wallops Flight Facility (WAL)

<p>V For uncompensated Baro-VNAV systems, LNAV/VNAV NA below -11°C (13°F) or above 54°C (130°F). DME/DME RNP-0.3 NA. Helicopter visibility reduction below ¾ SM NA. When local altimeter setting not received, use Salisbury altimeter setting: increase LPV DA to 372 and all Cats visibility ⅓ mile, increase LNAV/VNAV DA to 437 and all Cats visibility ¼ mile, increase all MDA 60 feet and LNAV Cats C/D visibility ⅓ mile and Circling Cat C visibility ¼ mile. Baro-VNAV and VDP NA when using Salisbury altimeter setting.</p>	<p>MISSED APPROACH: Climb to 600 then climbing right turn to 2000 direct MAGGO and hold.</p>
--	--

ASOS 119.175	PATUXENT APP CON ★ 127.95 314.0	Wallops Tower ★ 126.5 (CTAF) 0 306.975 (CTAF) 0	GND CON 127.875 269.325	CLNC DEL 121.7
------------------------	---	---	-----------------------------------	--------------------------



VGSi and RNAV glidepath not coincident (VGSi Angle 3.00/TCH 63).		600	2000	MAGGO
5 NM Holding Pattern DOVAY		*INAV only.		
2000 ← 349°		1700		
GP 3.00° TCH 55		1700		
DOVAY		GELTE		
169° →		169°		
1700		1700		
6 NM		3.8 NM		
1.3 NM to RWY 17		RWY 17		
CATEGORY	A	B	C	D
LPV DA	322-1		283 (300-1)	
LNAV/VNAV DA	387-1 ⅓		348 (400-1 ⅓)	
LNAV MDA	500-1	461 (500-1)	500-1 ⅓	461 (500-1 ⅓)
CIRCLING	600-1	560 (600-1)	620-1 ½ 580 (600-1 ½)	860-2 ¾ 820 (900-2 ¾)

NE-3, 10 JUL 2025 to 07 AUG 2025

NE-3, 10 JUL 2025 to 07 AUG 2025